

MJ CYCLE

Technically Beyond Amazing



2021
PRODUCT LINE

STEMS

MTB / ROAD / CITY : 04
VARIABLE ANGLE ADJUSTMENT : 14
TRIAL : 17
CNC-MACHINING TECHNOLOGY : 19
DH / FR / DJ / ENDURO : 20
BMX : 25
EXTENDER : 26

HANDLEBARS

SPIRAL BUTTED TUBING: 26
ROAD / GRAVEL : 28
HANDLEBAR FABRICATION : 31
MTB / DH / ENDURO : 32
TREKKING, BIKEPACKING, TOURING : 37
BMX BUTTED CRMO : 38

BAR ENDS

MTB XC : 41

SEATPOSTS

QUICK ADJUSTMENT SYSTEM : 45
MTB / ROAD / DH : 45
EZ-SPRING SYSTEM : 48

ACCESSORIES

SEATPOST CLAMPS : 51
SPROCKETS : 54
DIRECT-MOUNT SPROCKET / CHAINRINGS : 56
HEADSET PARTS : 57
SPACERS : 58



WE'RE
BUILDING
GREAT
THINGS

When we started making bicycles over 30 years ago, our mission was simple: To build the best bicycle parts in the world. As the years go by we see our focus on quality finally bearing results as more and more bicycle brands from every corner of the world relied on us to manufacture their high-performance products. This led us to focus on manufacturing efficiency by investing heavily in hardware and manpower to ensure that we are able to maintain our high standards as well as on-time production and delivery.

As bicycles evolve with new technologies and innovations, we realized the importance of not only keeping pace but also being in the forefront of the bicycle revolution. Enter our team of highly-experienced engineers, designers and technicians, a group of bicycle-crazy eggheads and support staff that are responsible for some of the bicycle patents that make riding not only more fun, but also a lot safer. We also acquired several EN-standard testing machines to further enhance our ability to produce reliable and safe products.

**IN 2013, MJ CYCLE WAS GRANTED
ISO 9001 - 2008 CERTIFICATION.**

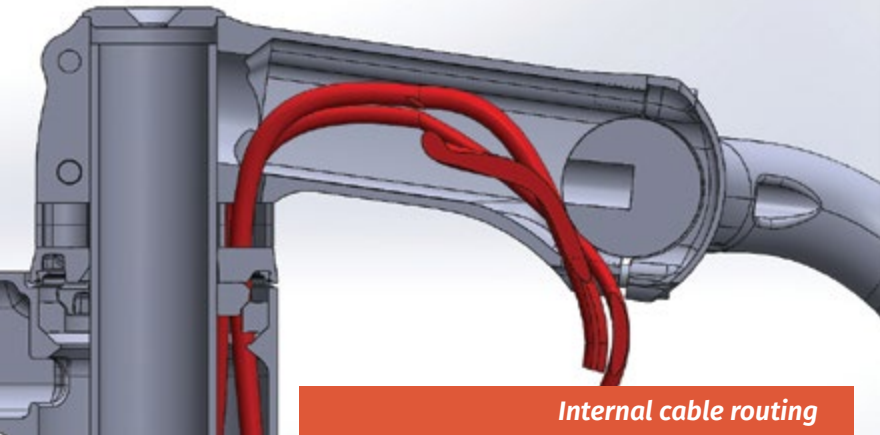
Through the years, changes and challenges, our mission remains the same. And we honor that mission with the same passion and commitment as the very first day we opened our factory door.

All of our facilities are located in Taiwan. All of our products are proudly made with care in Taiwan. This means quality, reliability and no-nonsense integrity in dealing with you. Need a product made or a technical issue resolved before mass production? Contact us and our team of exerts will assist you. We invite you to try our products and services. Experience the difference.

STEMS
MTB
ROAD
CITY



STEMS | MTB, ROAD, CITY



Internal cable routing
Suitable for Token System

AL 6061 3D

TB-099IN

3-D forged 6061 T6 alloy

MATERIAL

BAR BORE

EXTENSION

STEERER

ANGLE

HEIGHT

WEIGHT

31.8 mm

70 - 120 mm

28.6 mm

- 8°

40 mm

STEMS | MTB, ROAD, CITY



REWIND-7

REWIND-717

FAMA

AL 7050 3D

AL 7050 3D

AL 7050 3D

	REWIND-7	REWIND-717	FAMA
MATERIAL	3-D forged 7050 T73 alloy with stainless steel screws	3-D forged 7050 T73 alloy with stainless steel screws	3-D forged 7050 T73 alloy with stainless steel screws
BAR BORE	31.8mm	31.8mm	31.8mm
EXTENSION	70 - 130mm	80 - 120mm	50 (NEW) / 60 - 120 mm
STEERER	28.6mm	28.6mm	28.6mm
ANGLE	+/- 6°	+/- 17°	+/- 7°
HEIGHT	42mm	42mm	40mm
WEIGHT	120g (E: 110mm)		116g (E: 110mm)

STEMS | MTB, ROAD, CITY



HEAD CAP
TURRET 6
TURRET 10
TURRET 17
(black or polished)



HEAD CAP
TURRET 6A
TURRET 10A
TURRET 17A
(in black or polished)



TURRET 6



TURRET 10



TURRET 17

AL 6061 3D

AL 6061 3D

AL 6061 3D

	TURRET 6	TURRET 10	TURRET 17
MATERIAL	3-D forged 6061 T6 alloy	3-D forged 6061 T6 alloy	3-D forged 6061 T6 alloy
BAR BORE	31.8mm	31.8mm	31.8mm
EXTENSION	60 - 120mm	70 - 120mm	80 - 120mm
STEERER	28.6mm	28.6mm	28.6mm
ANGLE	+/- 6°	+/- 10°	+/- 17°
HEIGHT	40mm	40mm	40mm
WEIGHT	132g (E: 110mm)	138g (E: 110mm)	134g (E: 110mm)

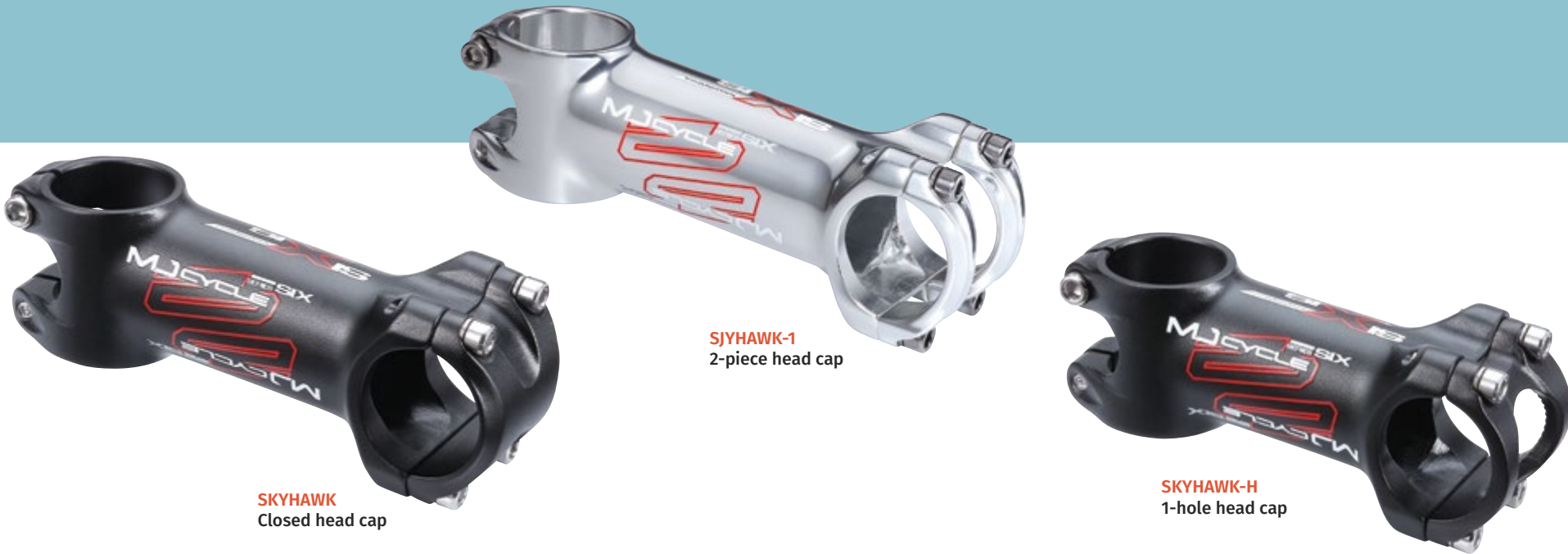
STEMS | MTB, ROAD, CITY



AL 6061 3D

	SPRY 254	SPRY	SPRY-09	SPRY-09H
MATERIAL	3-D forged 6061 T6 alloy	3-D forged 6061 T6 alloy	3-D forged 6061 T6 alloy	3-D forged 6061 T6 alloy
BAR BORE	25.4mm	31.8mm	31.8mm	31.8mm
EXTENSION	90 - 120mm	60 - 120mm	60 - 120mm	60 - 120mm
STEERER	28.6mm	28.6mm	28.6mm	28.6mm
ANGLE	+/- 6°	+/- 6°	+/- 6°	+/- 6°
HEIGHT	40mm	40mm	40mm	40mm
WEIGHT		129g (E: 110mm)	127g (E: 110mm)	127g (E: 110mm)

STEMS | MTB, ROAD, CITY



AL 6061 3D

	SKYHAWK	SKYHAWK-1	SKYHAWK-H
MATERIAL	3-D forged 6061 T6 alloy	3-D forged 6061 T6 alloy	3-D forged 6061 T6 alloy
BAR BORE	31.8mm	31.8mm	31.8mm
EXTENSION	50 / 60 - 120mm	70 - 120mm	70 - 120mm
STEERER	28.6mm	28.6mm	28.6 mm
ANGLE	+/- 7°	+/- 7°	+/- 7°
HEIGHT	40mm	40mm	40mm
WEIGHT	130g (E: 110mm)	127g (E: 110mm)	127g (E: 110mm)

AL 6061 3D

AL 6061 3D

STEMS | MTB, ROAD, CITY



	HAMY	ALPHA	VENOM
MATERIAL	3-D forged 6061 T6 alloy	3-D forged 6061 T6 alloy	2-D forged 6061 T6 alloy
BAR BORE	31.8mm	31.8mm	31.8mm
EXTENSION	80 - 120mm	70 - 100mm	50 / 65mm
STEERER	28.6mm	28.6mm	28.6mm
ANGLE	+/- 8°	- 20°	+/- 5°
HEIGHT	40mm	30mm	40mm
WEIGHT	143g (E: 110mm)	138g (E: 110mm)	

STEMS | MTB, ROAD, CITY



	TB-001	TB-002
MATERIAL	3-D forged 6061 T6 alloy	3-D forged 6061 T6 alloy
BAR BORE	31.8mm	31.8mm
EXTENSION	40 / 50 / 60mm	35 / 45 / 55mm
STEERER	28.6mm	28.6mm
ANGLE	0°	0°
HEIGHT		
WEIGHT		

STEMS | MTB, ROAD, CITY



AIR-BOMB



AL 6061 CNC

AIR-BOMB

Fully CNC-machined 6061 T6 alloy

31.8 / 35mm

35 / 45 / 60 / 70 / 85 / 100mm

28.6mm

6°

35mm

104g (E: 45mm), 110g (E:60mm)



AIR-BOMB 01

AL 6061 CNC

AIR-BOMB 01

Fully CNC-machined 6061 T6 alloy

31.8 / 35mm

35 / 45 / 55 / 70mm

28.6mm

0°

40mm

STEMS | MTB, ROAD, CITY: 35°



SPRY 35H

AL 6061 3D

SPRY 35H

3-D forged 6061 T6 alloy

25.4mm

70 / 90 / 110 / 120mm

28.6mm

35°

41.5mm



SPRY 3511

AL 6061 3D

SPRY 3511

3-D forged 6061 T6 alloy

31.8 / 25.4mm

70 / 90 / 110 / 120mm

28.6mm

35°

41.5mm



SPRY 3511H

AL 6061 3D

SPRY 3511H

3-D forged 6061 T6 alloy

31.8mm

70 / 90 / 110 / 120mm

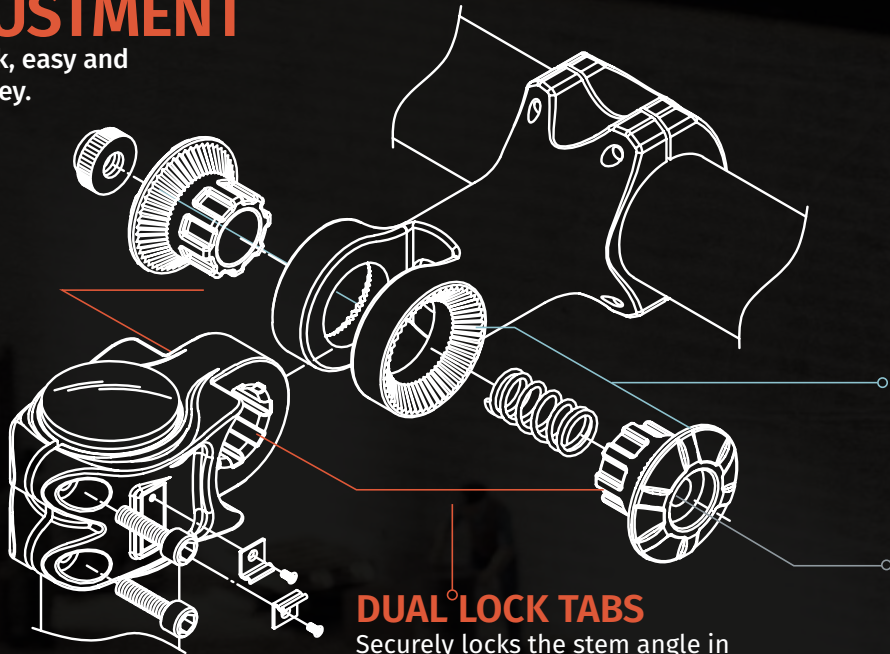
28.6mm

35°

41.5mm

VARIABLE ANGLE ADJUSTMENT

Exclusive patented MJ CYCLE design allows quick, easy and precise stem angle adjustment with just a hex key.



SERRATED TEETH
Prevents even tiny up / down movement when locked. Locks at both sides.

HEX BOLT
Quick and easy adjustment. No fancy tools needed.

DUAL LOCK TABS
Securely locks the stem angle in place. Unique patented design eliminates any chance of slippage.



DRAGON

TORO

TORO-1

AL 6061

AL 6061

AL 6061

DRAGON	TORO	TORO-1
Forged 6061 T6 alloy	Forged 6061 T6 alloy	Forged 6061 T6 alloy
31.8mm	31.8mm	31.8 mm
90 / 110mm (Bar Bore: 25.4) 90 / 105mm (Bar Bore: 31.8)	80 / 95mm (Bar Bore: 25.4) 80 / 100mm (Bar Bore: 31.8)	80 / 95mm (Bar Bore: 25.4) 80 / 100mm (Bar Bore: 31.8)
28.6mm	22.2 / 25.4mm, QUILL LENGTH: 165mm	22.2 / 25.4mm
ADJUSTABLE + 60° / - 48°	ADJUSTABLE + 80° / - 60°	ADJUSTABLE + 60° / - 48°

MATERIAL

BAR BORE

EXTENSION

(QUILL) STEERER

ANGLE

HEIGHT

DRAGON

TORO

TORO-1

Forged 6061 T6 alloy

Forged 6061 T6 alloy

Forged 6061 T6 alloy

31.8mm

31.8mm

31.8 mm

90 / 110mm (Bar Bore: 25.4)
90 / 105mm (Bar Bore: 31.8)

80 / 95mm (Bar Bore: 25.4)
80 / 100mm (Bar Bore: 31.8)

80 / 95mm (Bar Bore: 25.4)
80 / 100mm (Bar Bore: 31.8)

28.6mm

22.2 / 25.4mm, QUILL LENGTH: 165mm

22.2 / 25.4mm

ADJUSTABLE + 60° / - 48°

ADJUSTABLE + 80° / - 60°

ADJUSTABLE + 60° / - 48°

STEMS | MTB, ROAD, CITY



TB-072H

TB-088



TB-072H

Forged 6061 T6 alloy

25.4mm

40mm

28.6mm

+/- 10°

41mm

162g (E: 100mm)



TB-088

Forged 6061 T6 alloy

25.4 / 26.0mm

60 / 80mm (L: 130 / 180), 100mm (L: 130)

Quill Diameter: 22.2mm

- 20°

STEMS | TRIAL

HEAD CAP OPTIONS FOR RAM 25 ONLY



RAM 25-F



RAM 25-H



RAM 25



RAM 25



RAM



MJ-TL-01



RAM 25

3-D forged 6061 T6 alloy

31.8mm

135 / 145 / 155 / 165 / 175mm

28.6mm

25°

52mm



RAM

3-D forged 6061 T6 alloy

31.8mm

90 / 105 / 120 / 135 / 150 / 165mm

28.6mm

35°

52mm



MJ-TL-01

3-D forged 7075 T73 alloy

31.8mm

130 / 157mm

28.6 mm

28.5°

STEMS DH DJ FR ENDURO

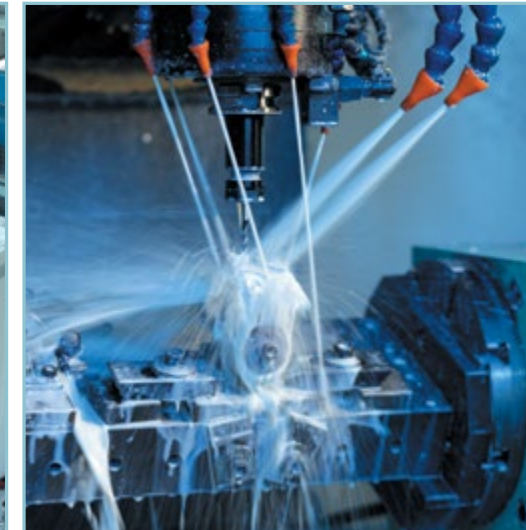
STEMS | TECHNOLOGY

CNC-MACHINING

MJ Cycle's in-house CNC machines show why MJ Cycle's products are known for precision and quality

When it comes to uncompromising precision and quality, nothing comes close to CNC-machined products. Through our ICE Corporation, we have been making CNC-machined products for years and are always upgrading our technology and manpower. You can be assured that when it comes to CNC-machining, MJ Cycle is second to none.

For more information on our CNC-machined products and CNC-machining services, refer to our web site or contact us directly.



STEMS | DH, DJ, FR, ENDURO: CNC



AL 6061 CNC DIRECT MOUNT STEM

MJ-BOXER01

Fully CNC-machined 6061 T6 alloy

35.0 / 31.8mm

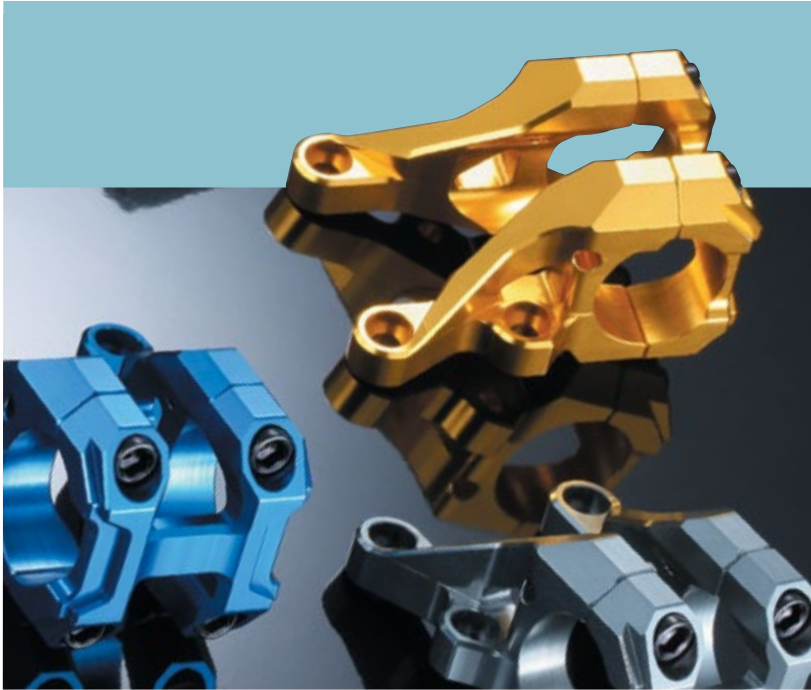
47 / 52mm

28.6mm

30°

HEIGHT

WEIGHT



AL 6061 CNC DIRECT MOUNT STEM

MJ-BOXER02

Fully CNC-machined 6061 T6 alloy

35.0 / 31.8mm

50mm

28.6mm

0°

HEIGHT

WEIGHT

STEMS | DH, DJ, FR, ENDURO: CNC



MJ-BOXER03

AL 6061 CNC DIRECT MOUNT STEM

MJ-BOXER03

CNC-machined 7075 T6 alloy

B: 31.8 / 35

47 mm

STEERER

0°

HEIGHT

WEIGHT

EAGLE PRO

AL 6061 CNC

EAGLE PRO

Fully CNC-machined 6061 T6 alloy

31.8 / 35mm

35 / 45mm

28.6mm

0°

40mm

127g (E: 45mm)

FROST

AL 6061 CNC

FROST

Fully CNC-machined 6061 alloy

31.8 / 35mm

35 / 45mm

28.6mm

0°

HEIGHT

WEIGHT

STEMS | DH, DJ, FR, ENDURO: CNC



TB-098
(3-pieces)



TB-097

AL 6061 CNC

TB-098

Fully CNC-machined 6061 alloy

AL 6061 CNC

TB-097

Fully CNC-machined 6061 T6 alloy

MATERIAL

BAR BORE

EXTENSION

STEERER

ANGLE

HEIGHT

WEIGHT

31.8mm

40 / 50mm

28.6mm

0°

35.0 / 31.8mm

35 / 45mm

28.6mm

0°

STEMS | DH, DJ, FR, ENDURO



TB-095NC



TB-094



TB-092



AL 6061 CNC

TB-095NC

CNC-machined 6061 alloy

AL 6061

TB-094

Forged 6061 alloy

AL 6061 CNC

TB-092

CNC-machined 6061 alloy

MATERIAL

BAR BORE

EXTENSION

STEERER

ANGLE

HEIGHT

WEIGHT

31.8 / 35mm

35 / 45mm

28.6mm

0°

31.8 / 35mm

40 / 50mm

28.6mm

0°

31.8 / 35mm

35 / 45mm

28.6mm

0°

STEMS | DH, DJ, FR, ENDURO



TB-090



APEX



THETA-NC

THETA



	TB-090	APEX	THETA / THETA NC
MATERIAL	3-D forged 6061 T6 alloy	Fully CNC-machined 6061 T6 alloy	Forged 6061 T6 alloy
BAR BORE	35.0 / 31.8mm	35.0 / 31.8mm	35.0 / 31.8mm
EXTENSION	40 / 50 / 60mm	35 / 45mm	35 / 45mm
STEERER	28.6mm	28.6mm	28.6mm
ANGLE	0°	0°	0°
HEIGHT	40mm	40mm	40mm
WEIGHT		136g (E: 45mm)	175g (E: 45mm)

STEMS | BMX



MF-001

MF-002

MF-960NC



	MF-001	MF-002	MF-960NC
MATERIAL	Melt-forged body, forged top cap. Up road style	Melt-forged body, forged top cap. Up road style	Fully CNC-machined 6061 T6 alloy
BAR BORE	22.2mm	22.2mm	22.2mm
EXTENSION	50mm	50mm	60mm
STEERER	28.6mm	28.6mm	0°
ANGLE			28.6mm
HEIGHT			34mm
WEIGHT			268g

STEMS | EXTENDER



MATERIAL

AL 6061 3D

MJ-SH-03

3-D forged 6061 T6 alloy

DIAMETER

28.6mm

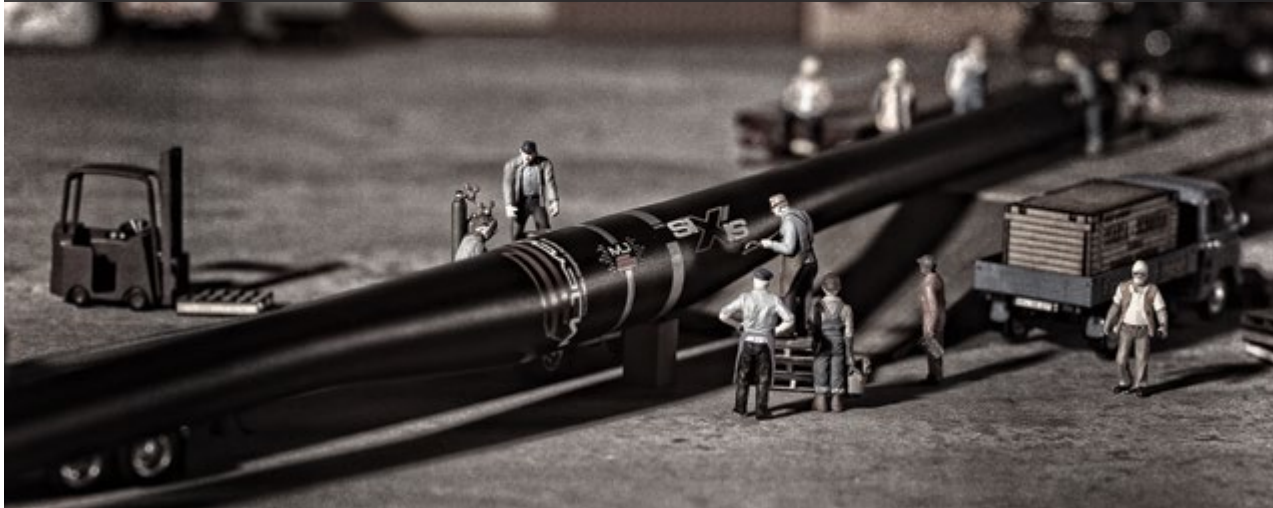
STEERER

28.6 / 31.8mm

LENGTH

67mm

HANDLEBARS | TECHNOLOGY



SPIRAL-BUTTED TUBING

GAME-CHANGING TUBE EXTRUSION TECHNOLOGY APPLIED TO ALL MJ CYCLE'S ALUMINIUM HANDLEBARS: MORE DURABLE, MORE STRENGTH, LESS WEIGHT.

TRADITIONAL LINEAR EXTRUSION

LINEAR PRESSURE



LINEAR PRESSURE



TWISTING PRESSURE



Traditional butting involves a cumbersome 3-step process that does not maximize the potential of aluminum and resulting in compromises.

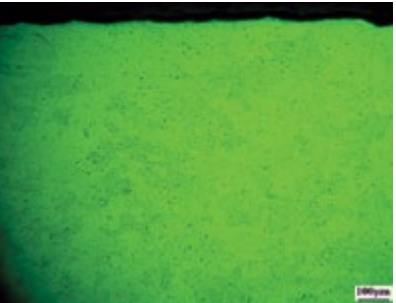
SPIRAL-BUTTING allows a more dense or compact packing of aluminum material within the tube structure. The result: a significant gain of strength and durability with less weight.

ONLY MJ CYCLE UTILIZES LEADING-EDGE SPIRAL BUTTING TECHNOLOGY ON HANDLEBARS

MATERIAL TEST REPORT : GRAIN SIZE ANALYSIS

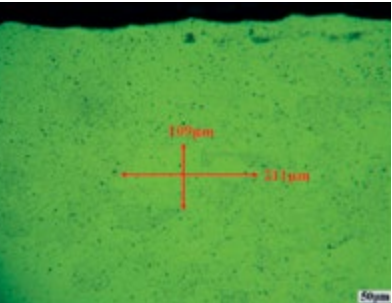
STANDARD DOUBLE-BUTTED TUBE

x100 Magnification

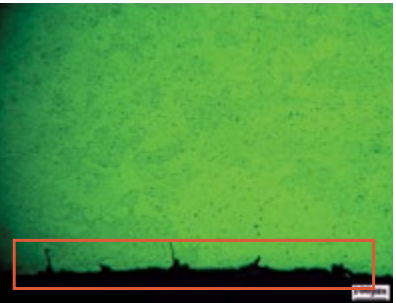


Outside wall: Less densely packed. Note diffused grain.

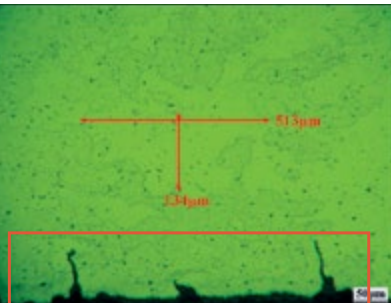
x200 Magnification



Outside wall: Less densely packed. Note diffused grain.



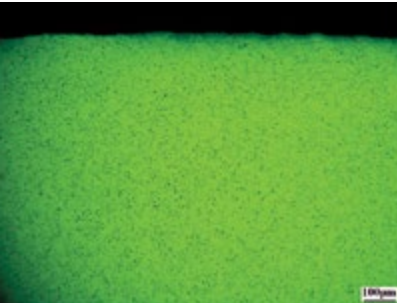
Inside wall: Material broken at 100 µm.



Inside wall: Material broken at 100 µm.

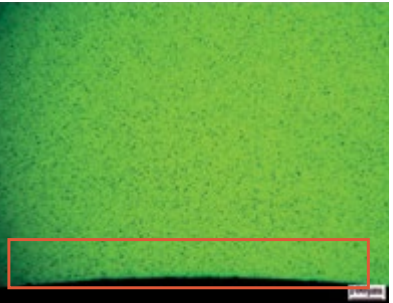
MJ SPIRAL DOUBLE-BUTTED TUBE

x100 Magnification

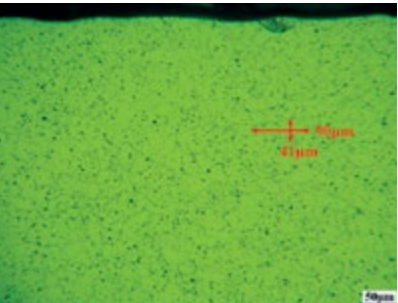


Outside wall: More densely packed. Note amount of grain.

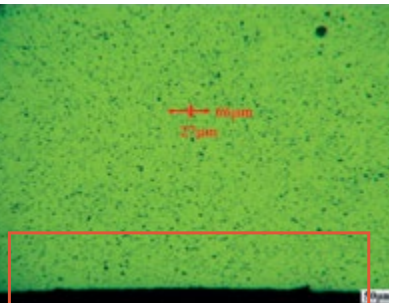
x200 Magnification



Outside wall: More densely packed. Note amount of grain.



Inside wall: Material remains together and unbroken.



Inside wall: Material remains together and unbroken.

PROCESS COMPARISON : BUTTED HANDLEBAR PRODUCTION

STANDARD

Step A

Outside shape / taper

Step B

Soften tube

Step C

Inside butting



Lower strength
Higher cost
Longer working time

MJ SPIRAL-BUTTED

Step A

Outside shape / taper and inside butting done together in a 1-STEP PROCESS



Higher strength
Lower cost
Shorter working time

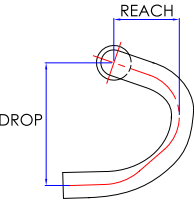
HANDLEBARS

ROAD GRAVEL

HANDLEBARS | ROAD, GRAVEL

SPECIAL DESIGNS:
- Rounded center with flat sides
- Internal cable routing (MJ-RH33-IN)

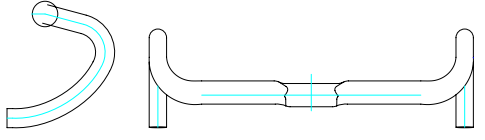
AL 6061
AL 7050
DB



MJ-RH29S Series

Double-buttet
MJ-RH29S-60 6061 T6 alloy
MJ-RH29S-70 7050 T73 alloy

AL 6061
DB



MJ-RH33 Series

Double-buttet
MJ-RH33-60 6061 T6 alloy
MJ-RH33-IN Internal cable routing, 6061 T6 alloy

MJ-RH33-70 303g

MATERIAL

BAR CENTER

WIDTH (C to C)

DROP

REACH

WEIGHT

31.8mm

400 - 440mm

130mm

75mm

31.8mm

400 - 440mm

140mm

75mm

HANDLEBARS | ROAD, GRAVEL

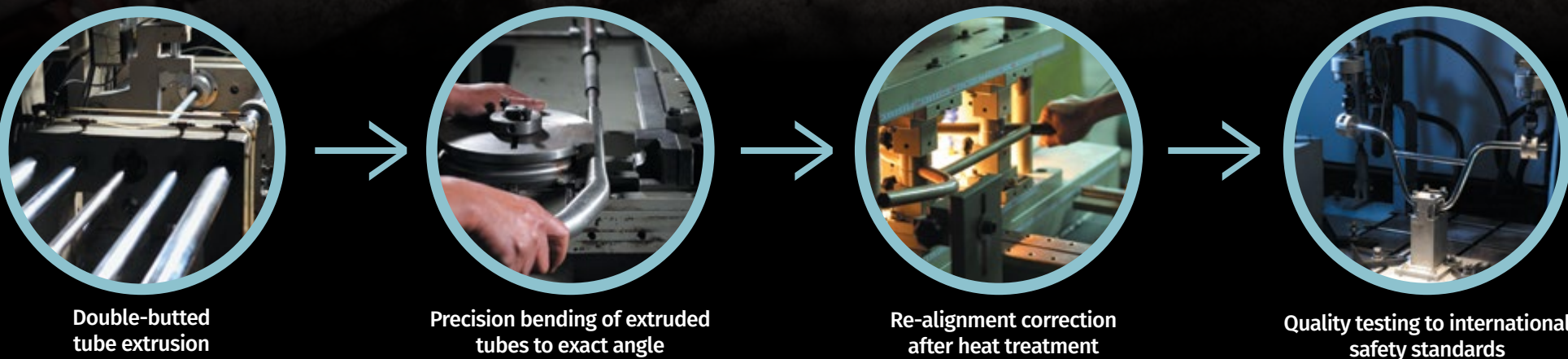


	<div>AL6061AL7050DB</div> <div>MJ-RH40-12</div>	<div>AL6061AL7050DB</div> <div>MJ-RH41-25</div>
MATERIAL	6061 T6 aluminum	6061 T6 aluminum
BAR CENTER	31.8mm	31.8mm
WIDTH (C to C)	360 - 500mm	360 - 500mm
DROP	125mm	125mm
REACH	80mm	80mm
DROP ANGLE	12°	25°
WEIGHT		

HANDLEBARS
MTB
DH
MISC



HANDLEBAR FABRICATION
MJ CYCLE'S UNIQUE HANDLEBAR MANUFACTURING PROCESS, ALL DONE AND QUALITY-CONTROLLED IN-HOUSE.



HANDLEBARS | MTB, DH, ENDURO: D35 SERIES



MJ-135TP Series



MJ-3351 Series

SPECIAL DESIGN:
Fuller bend shape
just below the taper.



MJ-3350 Series

SPECIAL DESIGN:
Single tapered.

AL 6061 AL 7050 DB

MJ-135 Series

Double-buttressed 6061 T6 alloy
MJ-135-60 6061 T6 alloy
MJ-135-70 7050 T74 alloy

AL 6061 AL 7050

MJ-3351 Series

MJ-3350-6 6061 T6 alloy
MJ-3350-7 7050 T74 alloy

AL 6061 AL 7050 DB

MJ-3350 Series

Double-buttressed
MJ-3350-6 6061 T6 alloy
MJ-3350-7 7050 T74 alloy

BAR BORE	35mm	35mm	35mm
RISE	0mm	25 / 40mm	12 / 25 / 38mm
WIDTH (C to C)	600 - 680mm	720 - 780mm	720 - 800mm
BACKSWEEP / UPSWEEP	7° / -	8° / 5°	8° / 5.5°

MJ-3350-6
MJ-3350-7 320g (W: 750mm)

HANDLEBARS | MTB, DH, ENDURO



MJ-131TP Series



MJ-131MT Series



MJ-133TP Series

AL 6061 AL 7050 DB

MJ-131TP Series

Double-buttressed
MJ-131TP-6 6061 T6 alloy
MJ-131TP-7 7050 T73 alloy

AL 6061 AL 7050 DB

MJ-131MT Series

Double-buttressed
MJ-131MT-6 6061 T6 alloy
MJ-131MT-7 7050 T74 alloy

AL 6061 AL 7050 DB

MJ-133TP Series

Double-buttressed
MJ-133TP-6 6061 T6 alloy
MJ-133TP-7 7050 T74 alloy

BAR BORE	25.4 / 31.8mm	25.4 / 31.8mm	31.8mm
RISE	0mm	0mm	+/- 5mm
WIDTH (C to C)	540 - 700mm	720 - 780mm	540 - 700mm
BACKSWEEP / UPSWEEP	7° / -	7° / -	7° / -

220g (W: 680mm)

HANDLEBARS | MTB, DH, ENDURO



MJ-133MT Series



MJ-134

SPECIAL DESIGN:
Wide and flat grip area,
rounded center.



MJ-015BT/MT Series

AL 6061 AL 7050 DB

MJ-133MT Series

Double-buttet
MJ-133MT-6 6061 T6 alloy
MJ-133MT-7 7050 T74 alloy

AL 6061 DB

MJ-134

AL-6061 SDB

AL 6061 AL 7050 DB

MJ-015BT/MT Series

MJ-015BT/MT-60 6061 T6 alloy
MJ-015BT/MT-70 7050 T74 alloy

MATERIAL			
BAR BORE	31.8mm	31.8mm	31.8mm
RISE	+/- 5mm	8mm	15 / 25mm
WIDTH (C to C)	720 - 780mm	720 - 760mm	MJ-015BT 620 - 700mm MJ-015MT 720 - 800mm
BACKSWEEP / UPSWEEP	7° / -	10° / 4°	8° / 5°
WEIGHT			

HANDLEBARS | MTB, DH, ENDURO



MJ-3550



MJ-3552



MJ-3558 Series

SPECIAL DESIGN:
Fuller bend shape just
below the taper.

AL 6061 AL 7050 DB

MJ-3550

Double-buttet 7050 T73 alloy

AL 7050 DB

MJ-3552

Double-buttet 7050 T73 alloy

AL 6061 AL 7050

MJ-3558 Series

MJ-3558-60 6061 T6 alloy
MJ-3558-70 7050 T74 alloy

MATERIAL			
BAR BORE	31.8mm (2.4 / 1.4)	31.8mm	31.8mm
RISE	25mm	8 / 12mm	20 / 40mm
WIDTH (C to C)	720 - 800mm	700 - 810mm	720 - 800mm
BACKSWEEP / UPSWEEP	5° / 8°		8° / 5°
WEIGHT	300g		

HANDLEBARS | MTB, DH, ENDURO



	<div>AL 7050 DB</div> MJ-3536	<div>AL 6061 DB</div> MJ-3557
MATERIAL	Double-buttet 7050 T73 alloy	Double-buttet 6061 T6 alloy
BAR BORE	31.8mm (2.2 / 1.2)	31.8mm
RISE	20 / 38mm	76mm
WIDTH (C to C)	700 - 800mm	680 - 740mm
BACKSWEEP / UPSWEEP	8° / 5.5°	7° / 5.5°
WEIGHT		380g

HANDLEBARS | TREKKING, BIKEPACKING, TOURING



	<div>AL 6061</div> MJ-TR-01	<div>AL 6061</div> MJ-TR-02	<div>AL 6061</div> MJ-TR-03	<div>AL 6061</div> MJ-TR-04	<div>AL 6061 DB</div> MJ-TR-05-AERO	<div>AL 6061</div> MJ-TR-06
MATERIAL	6061 T6 alloy	6061 T6 alloy	6061 T6 alloy	6061 T6 alloy	Double-buttet 6061 T6 alloy	6061 T6 alloy
BAR BORE	31.8mm	31.8mm	31.8mm	31.8mm	31.8mm	31.8mm
RISE	40mm	0mm	17mm	22mm	730mm	640 - 700mm
WIDTH (C to C)	660mm	680mm	640mm	700mm	0mm	0mm
BACKSWEEP / UPSWEEP	35° / 0°	40° / 20°	30° / 0°	30° / 3°	22° / 48°	- / 42.5°
WEIGHT						

HANDLEBARS | TREKKING, BIKEPACKING, TOURING



SPECIAL DESIGN:
Welded integrated handlebar
and stem

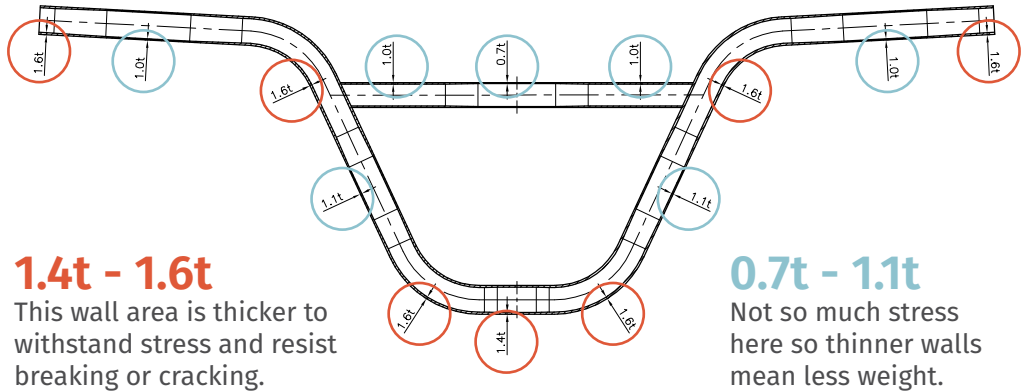
	AL 6061	AL 6061	AL 6061	AL 6061
	MJ-TR-01-WT	MJ-TR-02-WT	MJ-TR-03-WT	MJ-TR-04-WT
MATERIAL	6061 T6 alloy	6061 T6 alloy	6061 T6 alloy	6061 T6 alloy
BAR BORE	31.8mm	31.8mm	31.8mm	31.8mm
RISE	40mm	0mm	17mm	22mm
WIDTH (C to C)	660mm	680mm	640mm	700mm
BACKSWEEP / UPSWEEP	35° / 0°	40° / 20°	30° / 0°	30° / 3°
WEIGHT				

HANDLEBARS | BMX

BUTTED CRMO

OPTIMUM STRENGTH-TO-WEIGHT RATIO

MJ Cycle has already perfected the art and science of butted CrMo tubing, delivering the trifecta of low weight, maximum strength and long-lasting durability. Butted CrMo technology is especially suited for handlebars frequently subjected to intense stress where low weight is also a major consideration.



1.4t - 1.6t
This wall area is thicker to withstand stress and resist breaking or cracking.

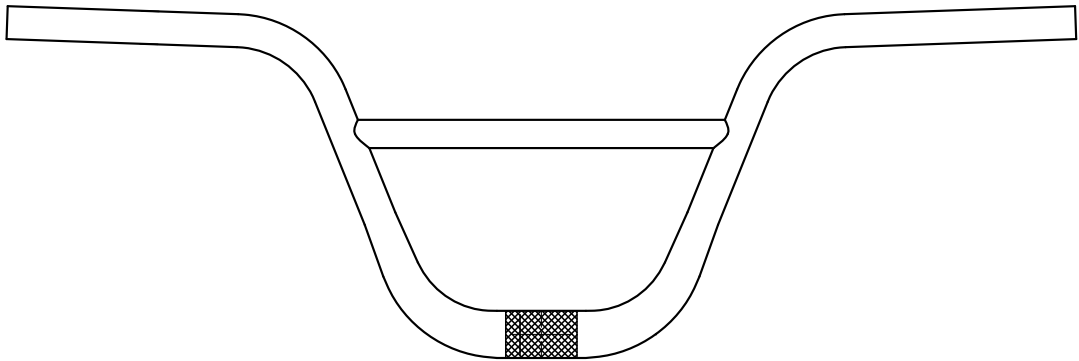
0.7t - 1.1t
Not so much stress here so thinner walls mean less weight.

	BAR BORE (mm)	CROSSBAR (mm)	RISE (inch)	RISE (mm)	WIDTH (mm)	BUTTED
MJ-211D (Standard crossbar)	22.2	19 / 22.2	5.5	140	670	11
			6.0	152	660	
			6.5	165	640	
			6.75	171	680	
			7	177	645	
MJ-211DX (X crossbar)	22.2	19	7.25	184	675	13
			7.5	190	710	
			7.25	196	710	
			8	203	720	
			8.25	209	722	
MJ-213D (Standard crossbar)	22.2	19	8.5	215	722	13
			8.75	222	760	
			9	228	765	
MJ-213DX (X crossbar)	22.2	19				13





HANDLEBARS | BMX



COMING SOON

	MJ-318D	MJ-318X
MATERIAL	Butted CrMo with heat treatment	Butted CrMo with heat treatment
BAR BORE	31.8mm	31.8mm
CROSSBAR	19 / 22.2	X butted shape
HEIGHT / RISE	7.5in / 190mm; 8.0in / 203mm	7.5in / 190mm; 8.0in / 203mm
WIDTH (C to C)	720mm	720mm
WEIGHT		

BAR ENDS
MTB



BAR ENDS | MTB XC



	<div>AL 6061 3D</div> BE-1159	<div>AL 6061 3D</div> BE-1161	<div>AL 6061 3D</div> BE-1162
MATERIAL	3-D forged one-piece 6061 T6 alloy	3-D forged one-piece 6061 T6 alloy	3-D forged one-piece 6061 T6 alloy
LENGTH	110mm	110mm	96 / 110mm
WEIGHT	137g	144g	120g

BAR ENDS | MTB XC



	<div>AL 6061 3D</div> BE-1146	<div>AL 6061 3D</div> BE-1147	<div>AL 6061 3D</div> BE-1170
MATERIAL	3-D forged one-piece 6061 T6 alloy	3-D forged one-piece 6061 T6 alloy	3-D forged one-piece 6061 T6 alloy
LENGTH	96mm	76 / 96 / 120mm	115 / 120mm (Diameter: 22.2mm)
WEIGHT	120g	141g	134g

SEATPOSTS

MTB

ROAD



SEATPOSTS | ROAD, MTB

QUICK-ADJUST SYSTEM

Unique one-piece clamping mechanism with twin bolts for a convenient, precise and rapid saddle adjustment.



CARBON AL 6061 AL 7050 3D QAS

MSP-279 Series

MSP-279-6 3-D forged 6061 T6 alloy
MSP-279-7 3-D forged 7050 T6 alloy

AL 6061 QAS

MSP-255

Forged 6061 T6 head with alloy tube

MATERIAL

DIAMETER

LENGTH

OFFSET

WEIGHT

27.2 / 30.9 / 31.6mm

300 / 350 / 400mm

0mm

MSP-279-7 247g (D: 31.6, L: 350)

27.2 / 30.9 / 31.6mm

300 / 350 / 400mm

0mm

268g (D: 27.2, L: 350)

SEATPOSTS | ROAD, MTB



AL 6061 AL 7050 3D CNC QAS

MSP-268 Series

MSP-268 3-D forged 6061 T6 alloy
MSP-268-6NC 3-D forged 6061 T6 alloy with CNC-machining
MSP-268-7NC 3-D forged 7050 T6 alloy with CNC-machining

MATERIAL

DIAMETER

LENGTH

OFFSET

WEIGHT

27.2 / 30.9 / 31.6mm

300 / 350 / 400mm

0mm

MSP-268 268g (D: 31.6, L: 350)
MSP-268-6NC 265g (D: 31.6, L: 350)
MSP-268-7NC 265g (D: 31.6, L: 350)

SEATPOSTS | ROAD, MTB



AL 7075

AL 6061 3D QAS

AL 6061 3D

MSP-282NC

MSP-253

MSP-267

7075 T73 alloy

3-D forged 6061 T6 alloy

3-D forged 6061 T6 alloy

27.2 / 31.6mm

27.2 / 30.9 / 31.6mm

27.2 / 30.9 / 31.6mm

250 - 400mm

300 / 350 / 400mm

300 / 350 / 400mm

0mm

20mm

20mm

295g (D: 31.6, L: 350)

MATERIAL

DIAMETER

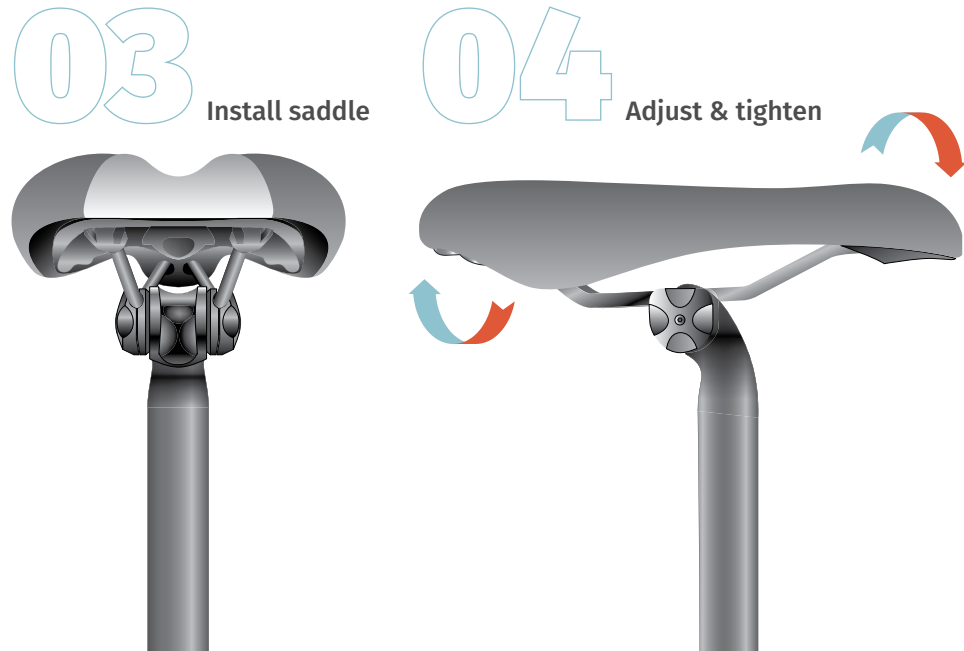
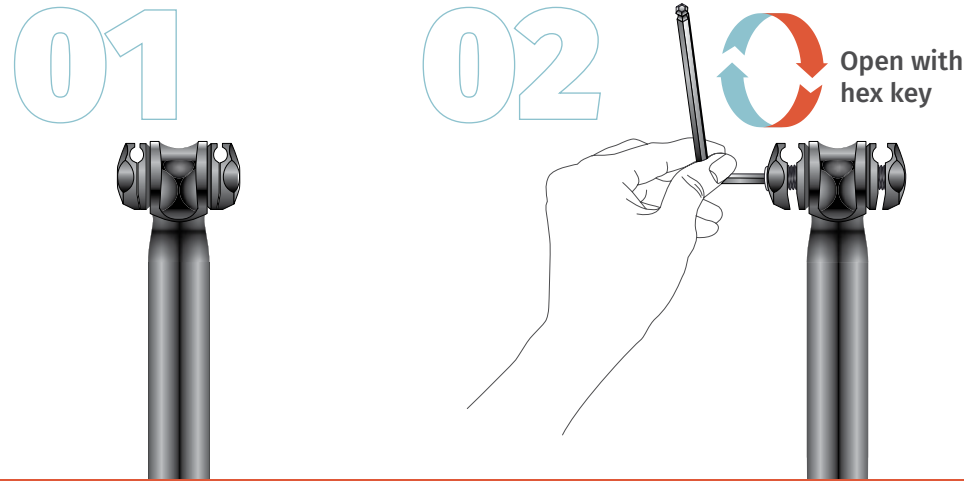
LENGTH

OFFSET

WEIGHT

SEATPOSTS | ROAD, MTB: EZ-Spring System

EZ **EZ-SPRING SYSTEM**
PATENTED DESIGN. A single hex key is all that's needed for a quick and easy seatpost adjustment.



Patented design

AL 6061 AL 7050 3D EZ

MSP-265 Series

MSP-265-6 3-D forged 6061 T6 alloy
MSP-265-7 3-D forged 7075 T73 alloy

27.2 / 30.9 / 31.6mm

250 / 300 / 350 / 400mm

0mm

MSP-265-6 261g (D: 31.6, L: 350)
MSP-265-7 230g (D: 27.2, L: 350)

SEATPOSTS | ROAD, MTB: EZ-Spring System

Patented design



AL 6061 AL 7050 3D EZ

MSP-266 Series

MSP-266-6 3-D forged 6061 T6 alloy
MSP-266-7 3-D forged 7050 T6 alloy

27.2 / 30.9 / 31.6mm

300 / 350 / 400mm

15 / 20mm

MSP-266-6
MSP-266-7 280g (D: 31.6, L: 350)



ACCESSORIES
SP CLAMPS
SPROCKETS
CHAINRINGS
HEADSET PARTS
SPACERS



ACCESSORIES | SEATPOST CLAMPS



AL 6061 CNC

MC-31NC

CNC-machined 6061 T6 alloy

28.6 / 29.8 / 31.8 / 34.9mm



AL 6061

MC-53

Forged 6061 T6 alloy

28.6 / 29.8 / 31.8 / 34.9mm



AL 6061

MC-71

Forged 6061 T6 alloy

28.6 / 29.8 / 31.8 / 34.9mm



AL 6061 CNC

MC-75NC

Fully CNC-machined 6061 T6 alloy

31.8mm



AL 6061

MC-76

Forged 6061 T6 alloy

28.6 / 29.8 / 31.8 / 34.9mm

MATERIAL

DIAMETER

COLORS

WEIGHT

ACCESSORIES | SEATPOST CLAMPS



AL 7050 CNC



AL 6061 CNC



AL 6061

	MC-93NC	MC-98NC	MC-94
MATERIAL	Fully CNC-machined 7050 T6 alloy	Fully CNC-machined 6061 T6 alloy	Forged 6061 T6 alloy
DIAMETER	28.6 / 29.8 / 31.8 / 34.9mm	28.6 / 29.8 / 31.8 / 34.9mm	28.6 / 30 / 31.8 / 34.9mm
COLORS	In several colors and finishes	In several colors and finishes	In several colors and finishes
WEIGHT	16g (Diameter: 34.9mm)		



AL 6061



AL 6061

	MQC-312	MQC-313
MATERIAL	Forged 6061 T6 alloy	Forged 6061 T6 alloy
DIAMETER	28.6 / 30 / 31.8 / 34.9mm	28.6 / 30 / 31.8 / 34.9mm
COLORS	In several colors and finishes	In several colors and finishes
WEIGHT		

ACCESSORIES | SEATPOST CLAMPS



AL 7050 CNC



AL 6061



AL 6061

	MQC-93NC	MQC-101	MQC-102
MATERIAL	Fully CNC-machined 7050 T6 alloy	Forged 6061 T6 alloy	Forged 6061 T6 alloy
DIAMETER	28.6 / 29.8 / 31.8 / 34.9mm	28.6 / 29.8 / 31.8 / 34.9mm	28.6 / 29.8 / 31.8 / 34.9mm
COLORS	In several colors and finishes		
WEIGHT	25g (Diameter: 34.9mm)		



AL 6061



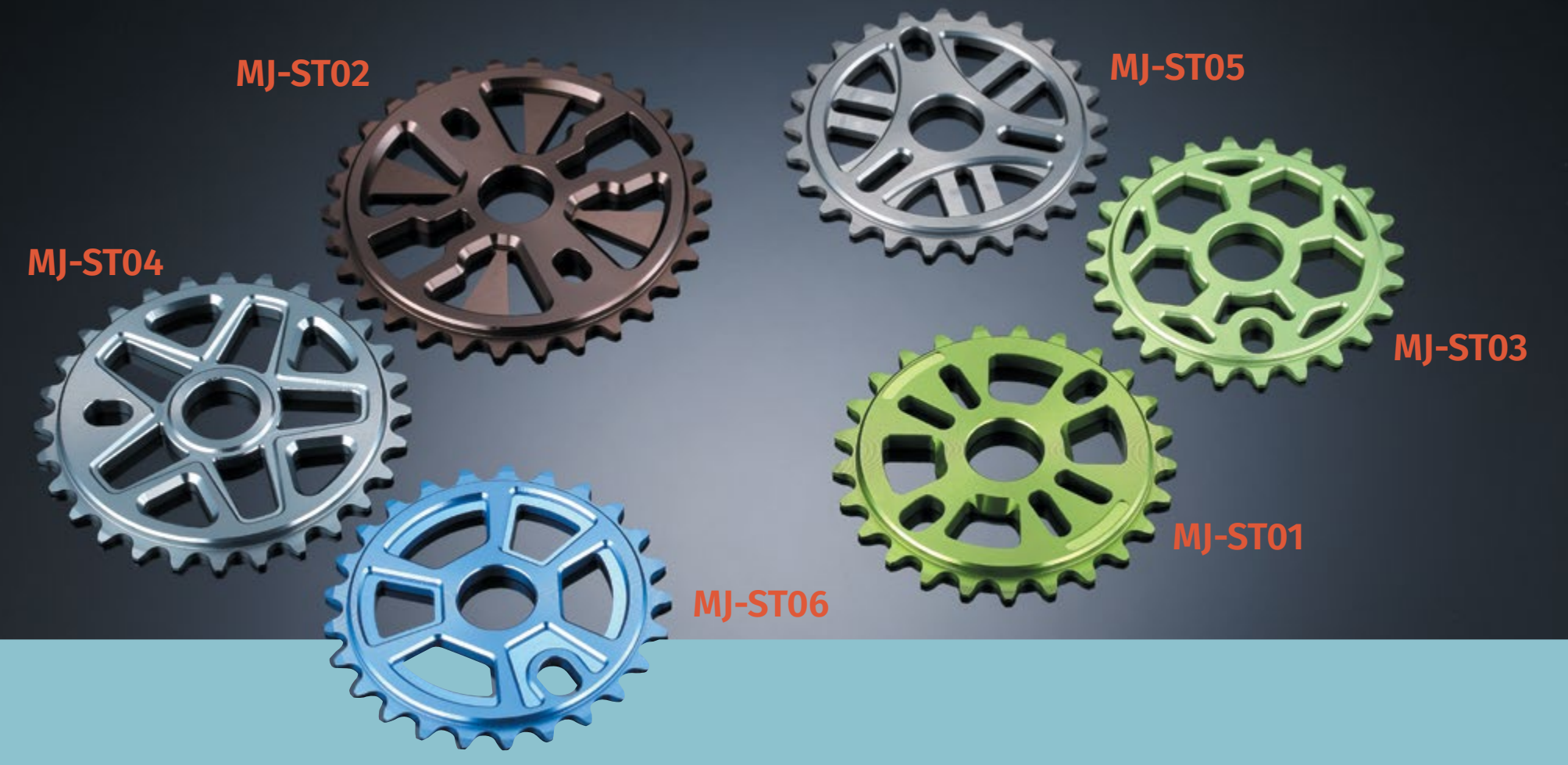
AL 6061 CNC



AL 6061

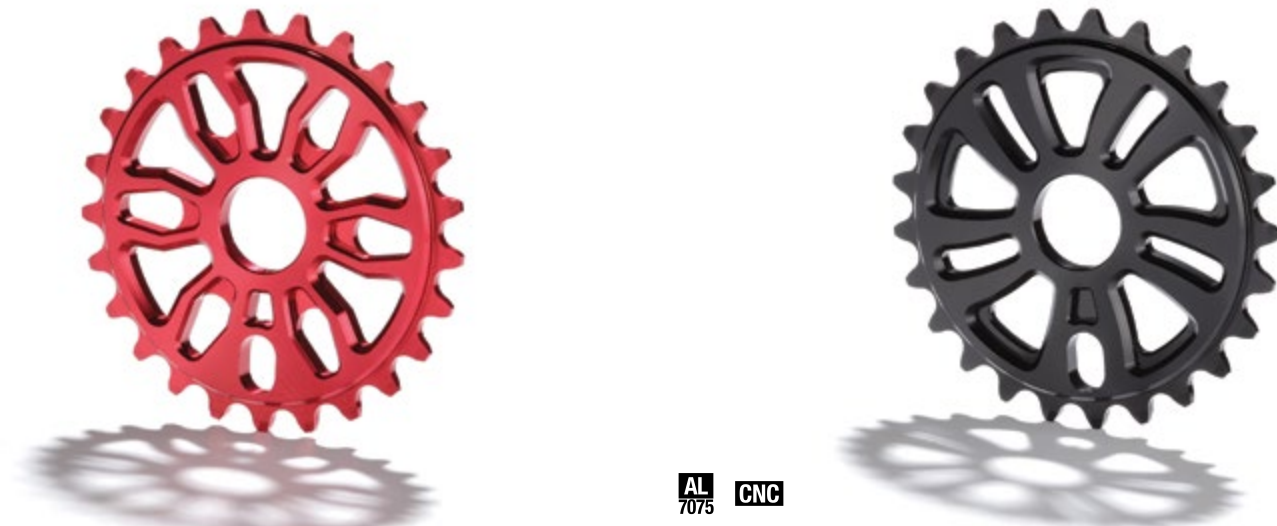
	MQC-308	MQC-310	MQC-311
MATERIAL	Forged 6061 T6 alloy	Forged 6061 T6 alloy	Forged 6061 T6 alloy
DIAMETER	28.6 / 29.8 / 31.8 / 34.9mm	28.6 / 29.8 / 31.8 / 34.9mm	28.6 / 29.8 / 31.8 / 34.9mm
COLORS		In several colors and finishes	In several colors and finishes
WEIGHT			

ACCESSORIES | SPROCKETS



	AL 6061 CNC		AL 7075 CNC	
	MJ-STXX-60 Series		MJ-STXX-70 Series	
	Fully CNC-machined 6061 T6 alloy		Fully CNC-machined 7075 T6 alloy	
	23 / 24 / 25 / 28 / 30 / 33 / 36 / 39		23 / 24 / 25 / 28 / 30 / 33 / 36 / 39	
MATERIAL				
TEETH				
THICKNESS	6 / 7mm		6 / 7mm	

ACCESSORIES | SPROCKETS



	AL 7075 CNC		AL 7075 CNC	
	MJ-ST08		MJ-ST09	
	CNC-machined 7075 T6 alloy		CNC-machined 7075 T6 alloy	
	23 / 24 / 25 / 28 / 30 / 32		23 / 24 / 25 / 28 / 30 / 32	
MATERIAL				
TEETH				
THICKNESS	6 / 7mm		6 / 7mm	



ACCESSORIES | DIRECT MOUNT SPROCKETS, CHAINRINGS



AL 7075 CNC DROP STOP DESIGN

MATERIAL
CNC-machined 7075 T6 alloy
TEETH
28 - 38
THICKNESS, BCD
REMARKS
In different anodized colors



AL 7075 CNC

MATERIAL
CNC-machined 7075 T6 alloy
TEETH
30 - 36
THICKNESS, BCD
50mm
REMARKS
In different anodized colors



AL 7075 CNC DROP STOP DESIGN

MATERIAL
CNC-machined 7075 T6 alloy
TEETH
30 - 42
THICKNESS, BCD
REMARKS
In different anodized colors



AL 7075 CNC

MATERIAL
CNC-machined 7075 T6 alloy
TEETH
30-36
THICKNESS, BCD
REMARKS



AL 7075 CNC

MATERIAL
CNC-machined 7075 T6 alloy
TEETH
32 - 42
THICKNESS, BCD
5mm
REMARKS
For 104mm 4-bolt cranks



AL 7075 CNC

MATERIAL
CNC-machined 7075 T6 alloy
TEETH
34 - 46
THICKNESS, BCD
5mm, 10 / 130mm
REMARKS

ACCESSORIES | HEADSET PARTS



AL 6061 CNC

MATERIAL
CNC-machined T6 alloy top cap with star washer
DIAMETER
25.4mm
APPLICATION



AL 6061 CNC

MATERIAL
Fully CNC-machined 6061 T6 alloy with carbon fiber cap
DIAMETER
1 inch for 19 - 23, 1.1/8 inch for 22 - 26
APPLICATION
For carbon fiber forks



AL 6061 CNC CARBON

MATERIAL
Fully CNC-machined 6061 T6 alloy
DIAMETER
1 inch for 19 - 23, 1.1/8 inch for 22 - 26
APPLICATION
For carbon fiber forks

ROBUST ALLOY SCREW & STAR NUT CENTER
Cold-forged for extra strength



AL 6061 CNC

MATERIAL
Aluminum cap
DIAMETER
22.2 / 25.4mm



AL 6061 CNC

MATERIAL
CNC-machined 6061 T6 alloy cap with CrMo screws and star nut center
DIAMETER
22.2 / 25.4mm



AL 6061 CNC

MATERIAL
CNC-machined 6061 T6 alloy cap with cold-forged alloy screw and star nut center
DIAMETER
22.2 / 25.4mm



AL 6061 CNC CARBON

MATERIAL
Carbon fiber cap
DIAMETER
22.2 / 25.4mm



AL
6061

WA-28 Series

6061 T6 alloy

28.8mm

WA-283 3mm
WA-285 5mm
WA-288 8mm
WA-2810 10mm

MATERIAL

INTERNAL DIAMETER

HEIGHT



AL
6061

CNC

WA-288NC

CNC-machined 6061 T6 alloy

28.8mm

3 / 5 / 8 / 10mm

MATERIAL

INTERNAL DIAMETER

WEIGHT



CARBON

WA-25 Series

6061 T6 alloy

25.6mm

WA-253 3mm
WA-255 5mm
WA-258 8mm
WA-2510 10mm

WA-28C Series

Carbon fiber

28.8mm

WA-283C 3mm
WA-285C 5mm
WA-2810C 10mm
WA-2815C 15mm

CARBON

WA-25C Series

Carbon fiber

25.6mm

WA-253C 3mm
WA-255C 5mm
WA-2510C 10mm
WA-2515C 15mm

GROOVED
For lighter weight



CARBON

WA-288C01

Carbon fiber

28.8mm

3 / 5 / 8 / 10mm

Check out our website for the latest news and products at

WWW.MJCYLE.COM





Technically Beyond Amazing

No. 51, Lane 303, Section 4, Yuanlu Road,
Hsihu Chen, Changhua Hsien, Taiwan

Tel +886 (0)4 881 2221 To 4
Fax +886 (0)4 885 2685

sales@mjcycle.com
www.mjcycle.com

CERTIFIED ISO 9001 - 2008

A photograph of a construction site. In the foreground, a yellow excavator is partially visible, with the number '970' on its side. A worker in a blue uniform stands in the background near a large pile of dirt. The text 'WE'RE BUILDING GREAT THINGS' is overlaid on the image in large, bold letters, with 'WE'RE BUILDING' in light blue and 'GREAT THINGS' in orange.

WE'RE BUILDING GREAT THINGS