



# MJ CYCLE

Technically Beyond Amazing



QUALITY PRODUCTS & SERVICES



EMPLOYEE WELFARE



SOCIAL PHILANTHROPY



ENVIRONMENTALISM

# 2025

## STEMS

MTB / ROAD / CITY : 6

TRIAL : 15

**VARIABLE ANGLE ADJUSTMENT : 16**

DH / FR / DJ / ENDURO : 18

**CNC-MACHINING TECHNOLOGY : 21**

BMX : 25

EXTENDER : 26

## HANDLEBARS

**SPIRAL BUTTED TUBING: 26**

ROAD / GRAVEL : 29

MTB / DH / ENDURO : 31

KIDS: 37

TREKKING, BIKEPACKING, TOURING : 38

**BMX BUTTED CRMO : 40**

## BAR ENDS

MTB XC : 41

## SEATPOSTS

**QUICK ADJUSTMENT SYSTEM : 45**

MTB / ROAD / DH : 45

**EZ-SPRING SYSTEM : 48**

## ACCESSORIES

SUSPENSION FORK PARTS: 51

SEATPOST CLAMPS : 52

SPROCKETS : 55

DIRECT-MOUNT SPROCKET / CHAINRINGS : 57

HEADSET PARTS : 58

SPACERS : 59

# WE'RE BUILDING GREAT THINGS

When we started making bicycles over 30 years ago, our mission was simple: To build the best bicycle parts in the world. As the years go by we see our focus on quality finally bearing results as more and more bicycle brands from every corner of the world relied on us to manufacture their high-performance products. This led us to focus on manufacturing efficiency by investing heavily in hardware and manpower to ensure that we are able to maintain our high standards as well as on-time production and delivery.

As bicycles evolve with new technologies and innovations, we realized the importance of not only keeping pace but also being in the forefront of the bicycle revolution. Enter our team of highly-experienced engineers, designers and technicians, a group of bicycle-crazy people and support staff that are responsible for some of the bicycle patents that make riding not only more fun, but also a lot safer. We also acquired several EN-standard testing machines to further enhance our ability to produce reliable and safe products.

## MJ CYCLE HAS BEEN GRANTED ISO 9001-2015 CERTIFICATION.

All of our facilities are located in Taiwan. All of our products are proudly made with care in Taiwan. This means quality, reliability and no-nonsense integrity in dealing with you. Need a product made or a technical issue resolved before mass production? Contact us and our team of experts will assist you. We invite you to try our products and services. Experience the difference.

## ABOUT THE COMPANY

MJ Industrial initially mainly produced steel and iron material - bicycle handlebars, risers and seat posts parts. With industrial upgrades, it converted to producing aluminum alloy products, improving process and material selection to achieve light weight and high-strength.

**MJ's customers include many well-known brands, providing high quality products.**



**NICK WU**  
Founder



**1987**  
Established



**ISO 9001-2015**  
Certification



**100**  
Employees



**IN CONTROL ENGINEERING CORP.**  
Related Enterprise

## ONE-STOP COMBINED SERVICES

Because of cross-industry involvement, MJ has production knowledge of different metal materials and surface treatments, so it can cooperate with customers in a diversified way.



CONCEPT



ENGINEERING



PROTOTYPING



PRODUCTION



QUALITY TESTING



PACKAGING



AFTER-SALES

## EXCITING DEVELOPMENTS ON THE HORIZON



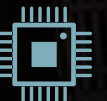
**CARBON EMISSIONS EVALUATION**  
Introduce carbon inventory plan to reduce the amount of carbon emissions.



**FULL PRODUCTION LINE AUTOMATION**  
Utilize automatic bending machines and robotic arms for optimum production efficiency and quality.



**CORE PROCESS EVALUATION**  
Perform preliminary evaluation and planning for the main production processes



**SMART MACHINE NETWORKING**  
To achieve continuous optimization of efficiency, intelligent production management and more consistent quality.



# QUALITY TESTING & INSPECTION

Increased investment in precision instruments and quality control personnel to provide products of consistently high quality.



ISO 9001 : 2015 QUALITY CERTIFICATION



ZEISS / SHEFFIELD CMM (COORDINATE MEASURING MACHINE)



2.5D PROFILE PROJECTORS



3D OPTICAL PROFILOMETER



HEIGHT GAUGE



ROUGHNESS TESTER



INNER & OUTER DIAMETER CALIPERS



EC CONDUCTIVITY TESTER



HARDNESS TESTER



FATIGUE TESTER



UNIVERSAL TESTING MACHINE

# PRODUCTION EQUIPMENT & PROCESSES

Continued process expansion to provide superior competitiveness in cost, production line flexibility and delivery time.



THICK-THIN TUBE DRAWING MACHINES



ROTARY PRESSURE DOUBLE BUTTED



TUBE BENDING MACHINES



MANUAL GRINDING /POLISHING MACHINES



SAND BLASTING MACHINES



LASER ENGRAVING MACHINES



ASSEMBLY AND PACKAGING LINE



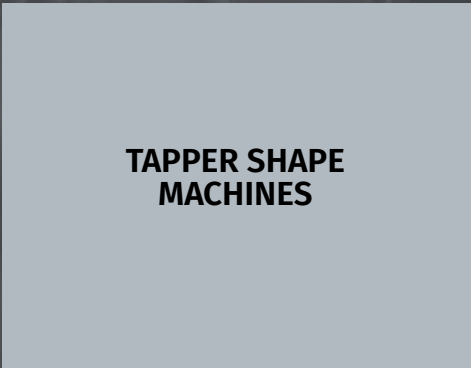
ROBOTIC TUBE BENDING MACHINE



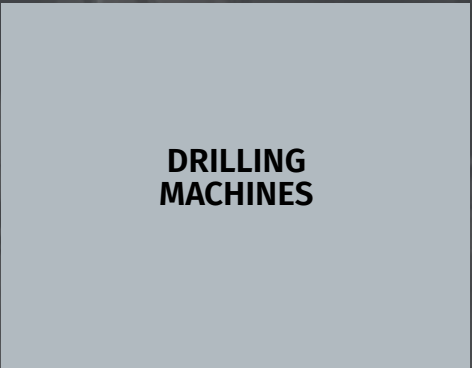
HEAT TREATMENT MACHINE



BROACHING MACHINES



TAPPER SHAPE MACHINES



DRILLING MACHINES

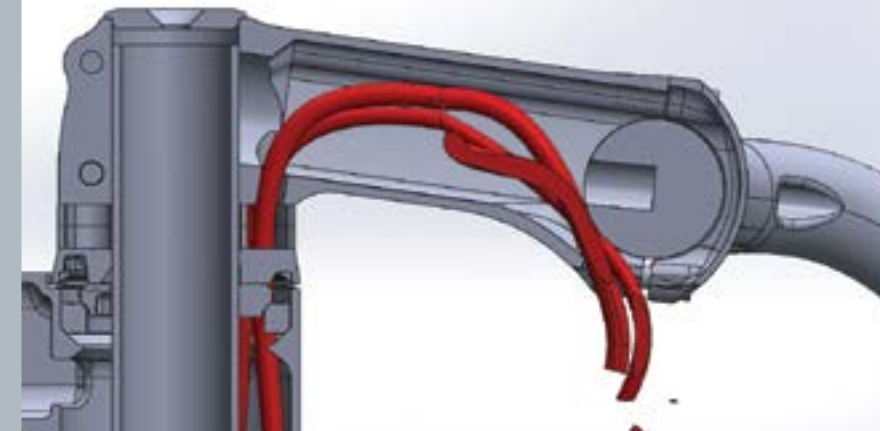
OTHERS





# STEMS MTB ROAD CITY

## STEMS » MTB, ROAD, CITY



Internal cable routing  
Suitable for Token System



### TB-099 Series

3-D forged 6061 T6 alloy

MATERIAL

BAR BORE

31.8 mm

EXTENSION

70 - 120 mm

STEERER

28.6 mm

ANGLE

**TB-099-IN:** -8°, **TB-099-0:** 0°, **TB-099-P8:** +8°

HEIGHT

40 mm

WEIGHT





STEMS » MTB, ROAD, CITY



Internal cable routing  
Allows 4 pcs of 5mm cables

Patented design



AL 6061 3D

	TB-100 Series	FAMA
MATERIAL	3-D forged 6061 T6 alloy <b>TB-100R:</b> With internal cable routing <b>TB-100:</b> Without internal cable routing	3-D forged 7050 T73 alloy with stainless steel screws
BAR BORE	31.8mm	31.8mm
EXTENSION	70 - 120mm	50 / 60 - 120 mm
STEERER	28.6mm	28.6mm
ANGLE	0°	+/- 7°
HEIGHT		40mm
WEIGHT		116g (E: 110mm)

STEMS » MTB, ROAD, CITY



HEAD CAP  
TURRET 6  
TURRET 10  
TURRET 17  
(black or polished)



AL 6061 3D

AL 6061 3D

AL 6061 3D

	TURRET 6	TURRET 10	TURRET 17
MATERIAL	3-D forged 6061 T6 alloy	3-D forged 6061 T6 alloy	3-D forged 6061 T6 alloy
BAR BORE	31.8mm	31.8mm	31.8mm
EXTENSION	60 - 120mm	70 - 120mm	80 - 120mm
STEERER	28.6mm	28.6mm	28.6mm
ANGLE	+/- 6°	+/- 10°	+/- 17°
HEIGHT	40mm	40mm	40mm
WEIGHT	132g (E: 110mm)	138g (E: 110mm)	134g (E: 110mm)

STEMS » MTB, ROAD, CITY



SPRY  
Closed head cap



SPRY-09  
2-piece head cap



SPRY-09H  
1-hole head cap



SKYHAWK  
Closed head cap



SKYHAWK-1  
2-piece head cap



SKYHAWK-H  
1-hole head cap



SPRY	SPRY-09	SPRY-09H
3-D forged 6061 T6 alloy	3-D forged 6061 T6 alloy	3-D forged 6061 T6 alloy
31.8mm	31.8mm	31.8mm
60 - 120mm	60 - 120mm	60 - 120mm
28.6mm	28.6mm	28.6mm
+/- 6°	+/- 6°	+/- 6°
40mm	40mm	40mm
129g (E: 110mm)	127g (E: 110mm)	127g (E: 110mm)



STEMS » MTB, ROAD, CITY



SKYHAWK	SKYHAWK-1	SKYHAWK-H
3-D forged 6061 T6 alloy	3-D forged 6061 T6 alloy	3-D forged 6061 T6 alloy
31.8mm	31.8mm	31.8mm
50 / 60 - 120mm	70 - 120mm	70 - 120mm
28.6mm	28.6mm	28.6 mm
+/- 7°	+/- 7°	+/- 7°
40mm	40mm	40mm
130g (E: 110mm)	127g (E: 110mm)	127g (E: 110mm)



STEMS » MTB, ROAD, CITY



TB-001



TB-001-1



TB-002



TB-002-1



TB-001 Series		TB-002 Series	
MATERIAL	3-D forged 6061 alloy TB-001: 1-piece cap TB-001-1: 2-piece cap	3-D forged 6061 alloy TB-002: 1-piece cap TB-002-1: 2-piece cap	
BAR BORE	31.8mm	31.8mm	
EXTENSION	40 / 50 / 60mm	35 / 45mm	
STEERER	28.6mm	28.6mm	
ANGLE	0°	0°	

STEMS » MTB, ROAD, CITY



TB-096-20



TB-096H-20



TB-096-45



TB-096H-45



TB-096-20 Series		TB-096-45 Series	
MATERIAL	3-D forged 6061 T6 alloy TB-096-20: Without light holder TB-096H-20: With light holder	3-D forged 6061 T6 alloy TB-096-45: Without light holder TB-096H-45: With light holder	
BAR BORE	31.8mm	31.8mm	
EXTENSION	90 / 110mm	90 / 110mm	
STEERER	28.6mm	28.6mm	
ANGLE	20°	45°	
WEIGHT			



STEMS » MTB, ROAD, CITY



	<div>AL 6061 3D</div> SPRY 3511	<div>AL 6061 3D</div> SPRY 3511H	<div>AL 6061 3D</div> TB-088
MATERIAL	3-D forged 6061 T6 alloy	3-D forged 6061 T6 alloy	Forged 6061 T6 alloy
BAR BORE	31.8 / 25.4mm	31.8mm	25.4 / 26.0mm
EXTENSION	70 / 90 / 110 / 120mm	70 / 90 / 110 / 120mm	60 / 80mm (L: 130 / 180), 100mm (L: 130)
STEERER	28.6mm	28.6mm	Quill Diameter: 22.2mm
ANGLE	35°	35°	- 20°
HEIGHT	41.5mm	41.5mm	
WEIGHT			

STEMS » TRIAL



RAM 25-1

RAM 25-H



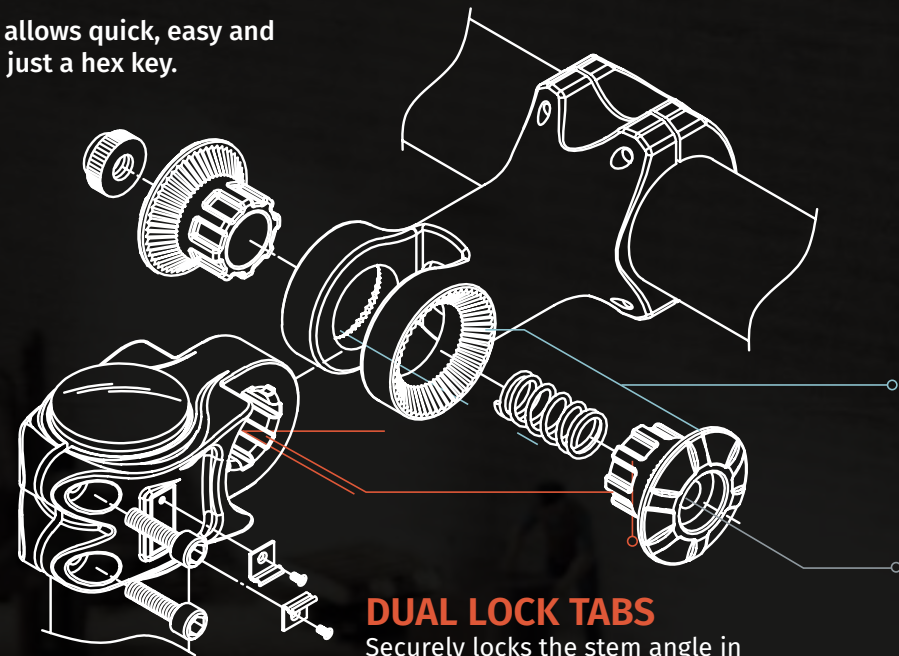
	<div>AL 6061 3D</div> RAM 25 / 25-1 / 25-H	<div>AL 6061 3D</div> RAM
MATERIAL	3-D forged 6061 T6 alloy	3-D forged 6061 T6 alloy
BAR BORE	31.8mm	31.8mm
EXTENSION	135 / 145 / 155 / 165 / 175mm	90 / 105 / 120 / 135 / 150 / 165mm
STEERER	28.6mm	28.6mm
ANGLE	25°	35°
HEIGHT	52mm	52mm



# STEMS » ADJUSTABLE

## VARIABLE ANGLE ADJUSTMENT

Exclusive patented MJ CYCLE design allows quick, easy and precise stem angle adjustment with just a hex key.



**DUAL LOCK TABS**  
Securely locks the stem angle in place. Unique patented design eliminates any chance of slippage.

**SERRATED TEETH**  
Prevents even tiny up / down movement when locked. Locks at both sides.

**HEX BOLT**  
Quick and easy adjustment. No fancy tools needed.



# STEMS » ADJUSTABLE



AL  
6061

### DRAGON

Forged 6061 T6 alloy

25.4 / 31.8mm

90 / 110mm (Bar Bore: 25.4)  
90 / 105mm (Bar Bore: 31.8)

28.6mm

**ADJUSTABLE** + 60° / - 48°

AL  
6061

### TORO

Forged 6061 T6 alloy

25.4 / 31.8mm

80 / 95mm (Bar Bore: 25.4)  
80 / 100mm (Bar Bore: 31.8)

22.2 / 25.4mm, QUILL LENGTH: 165mm

**ADJUSTABLE** + 80° / - 60°

AL  
6061

### TORO-1

Forged 6061 T6 alloy

25.4 / 31.8mm

80 / 95mm (Bar Bore: 25.4)  
80 / 100mm (Bar Bore: 31.8)

22.2 / 25.4mm

**ADJUSTABLE** + 80° / - 48°

MATERIAL

BAR BORE

EXTENSION

(QUILL) STEERER

ANGLE

HEIGHT



STEMS » DH, DJ, FR, ENDURO



TB-108-01



TB-107

SPECIAL CAP  
Optional for 35mm extension.



TB-108



AL  
6061



AL  
6061

TB-094

	TB-108 Series	TB-107	TB-094
MATERIAL	Forged 6061 alloy TB-108: Front cap without holes TB-108-01: Front cap with holes	Forged 6061 alloy	Forged 6061 alloy
BAR BORE	31.8 / 35mm	31.8 / 35mm	31.8 / 35mm
EXTENSION	35 / 45mm	35 / 45mm	35 / 45mm
STEERER	28.6mm	28.6mm	28.6mm
ANGLE	0°	0°	0°

STEMS » DH, DJ, FR, ENDURO



AL  
6061



AL  
6061

	THETA	THETA NC
MATERIAL	Forged 6061 T6 alloy	Forged 6061 T6 alloy
BAR BORE	35.0 / 31.8mm	35.0 / 31.8mm
EXTENSION	35 / 45mm	35 / 45mm
STEERER	28.6mm	28.6mm
ANGLE	0°	0°
HEIGHT	40mm	40mm
WEIGHT	175g (E: 45mm)	





# STEMS | TECHNOLOGY » CNC-MACHINING

## ADVANCED PRODUCTION PROCESSES CNC-MACHINING

Provides fast prototyping and high production flexibility, and works with precision measuring instruments to provide products with stable quality.

When it comes to uncompromising precision and quality, nothing comes close to CNC-machined products. Through our ICE Corporation, we have been making CNC-machined products for years and are always upgrading our technology and manpower. You can be assured that when it comes to CNC-machining, MJ Cycle is second to none.

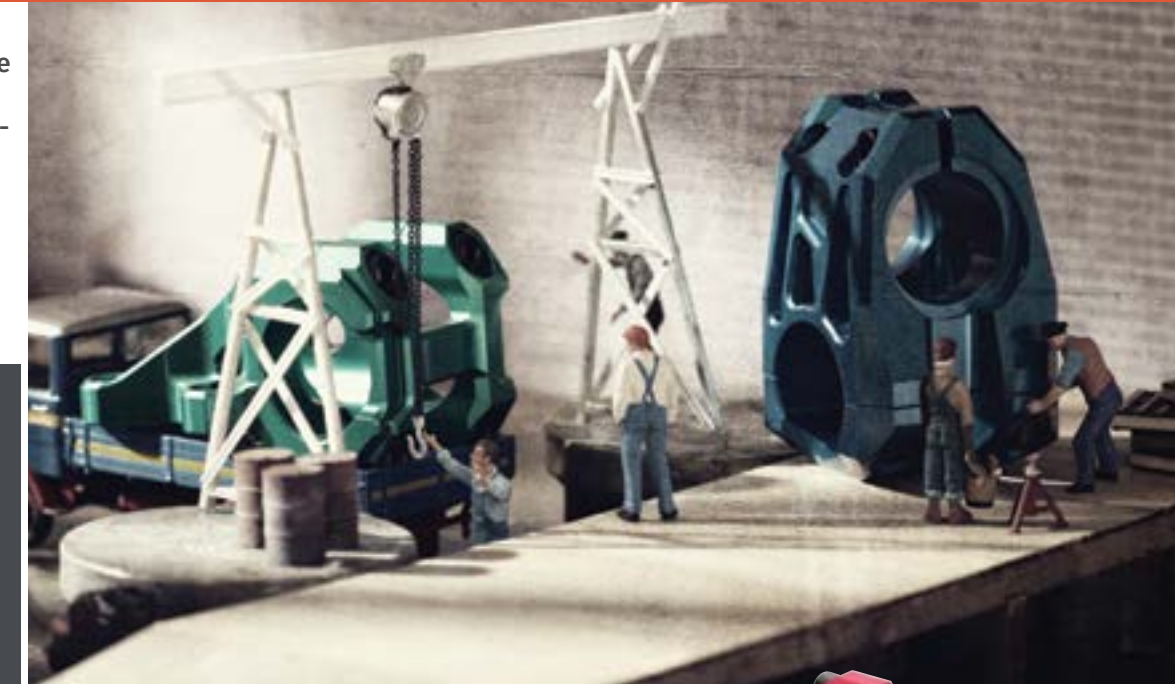
For more information on our CNC-machined products and CNC-machining services, refer to our web site or contact us directly.



MORE THAN 40 CNC MILLING & LATHES

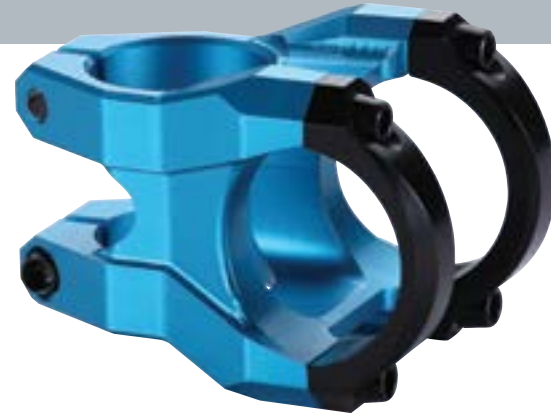


FROM 3 TO 5 AXES





STEMS » DH, DJ, FR, ENDURO



AL 6061 CNC

TB-105
CNC-machined 6061 T6 alloy
31.8 / 35mm
35 / 45mm
28.6mm
0°

AL 6061 CNC

TB-109
FullyCNC-machined 6061 T6 alloy
31.8mm
35 / 45mm
28.6mm
0°

AL 6061 CNC

EAGLE PRO
Fully CNC-machined 6061 T6 alloy
31.8 / 35mm
35 / 45mm
28.6mm
0°
40mm
127g (E: 45mm)

AL 6061

FROST
Fully CNC-machined 6061 alloy
31.8 / 35mm
35 / 45mm
28.6mm
0°

AL 6061 CNC

TB-095NC
CNC-machined 6061 alloy
31.8 / 35mm
35 / 45mm
28.6mm
0°

STEMS » DH, DJ, FR, ENDURO

MATERIAL

BAR BORE

EXTENSION

STEERER

ANGLE

HEIGHT

WEIGHT



STEMS » DH, DJ, FR, ENDURO

STEMS » BMX



TB-DH01 NC



TB-DH01 F



TB-DH02



TB-DH04



AL 6061 3D CNC DIRECT MOUNT

TB-DH01 Series

TB-DH01 NC: CNC-machined 6061 T6 alloy  
TB-DH01 F: Forged 6061 T6 alloy

31.8 / 35mm (35mm only for TB-DH01 NC)

47 / 52mm

28.6mm

30°

AL 6061 CNC DIRECT MOUNT

TB-DH02

CNC-machined 6061 T6 alloy

31.8 / 35mm

45 / 52mm

28.6mm

0°

AL 6061 CNC

TB-DH04

CNC-machined 6061 T6 alloy

31.8 / 35mm

47 / 52mm

28.6mm

30°

AL 6061

MF-001

Melt-forged body, forged top cap. Up road style

22.2mm

50mm

28.6mm

AL 6061

MF-002

Melt-forged body, forged top cap. Up road style

22.2mm

50mm

28.6mm

AL 6061 CNC

MF-003 NC

CNC-machined 6061 T6 alloy

22.2mm

45 / 50 / 53 / 57mm

MATERIAL

BAR BORE

EXTENSION

STEERER

ANGLE

HEIGHT

WEIGHT

STEMS » EXTENDER



AL 6061 3D

MJ-SH-03

3-D forged 6061 T6 alloy

28.6mm

28.6 / 31.8mm

67mm

HANDLEBARS | TECHNOLOGY



SPIRAL-BUTTED TUBING

MORE DURABLE, MORE STRENGTH, LESS WEIGHT, LESS WASTE.

TRADITIONAL LINEAR EXTRUSION

LINEAR PRESSURE



LINEAR PRESSURE



TWISTING PRESSURE

Traditional butting involves a cumbersome 3-step process that does not maximize the potential of aluminum and resulting in compromises. SPIRAL-BUTTING allows a more dense or compact packing of aluminum material within the tube structure. The result: **A SIGNIFICANT GAIN OF STRENGTH AND DURABILITY WITH LESS WEIGHT.**

ONLY MJ CYCLE UTILIZES LEADING-EDGE SPIRAL BUTTING TECHNOLOGY ON HANDLEBARS.

2 TYPES OF SPIRAL BUTTING

FULL SPIRAL BUTTING



Raw material.



Entire tube is spiral butted



Both sides of the handlebar undergoes another spiral butting process.

STRENGTH RATING



SINGLE PASS SPIRAL BUTTING



Raw material.



Both sides of the handlebar are spiral butted

STRENGTH RATING



MATERIAL TEST REPORT : GRAIN SIZE ANALYSIS



INCREASED DENSITY

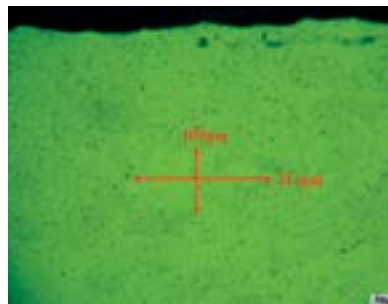
STANDARD DOUBLE-BUTTED TUBE

x100 Magnification

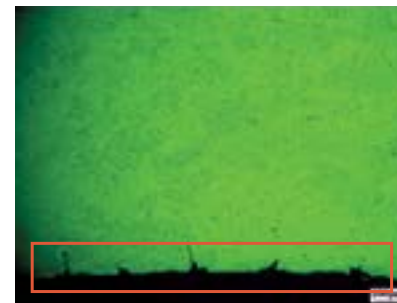


**Outside wall:** Less densely packed. Note diffused grain.

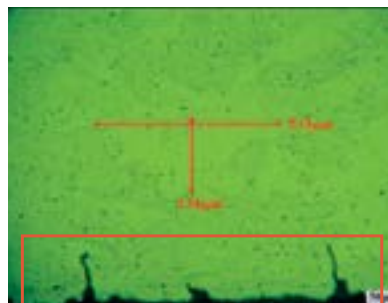
x200 Magnification



**Outside wall:** Less densely packed. Note diffused grain.



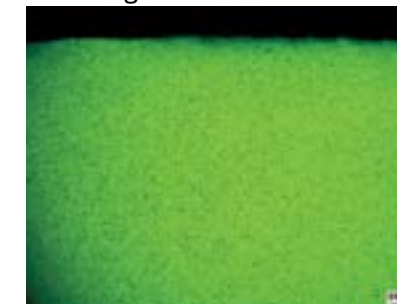
**Inside wall:** Material broken at 100 µm.



**Inside wall:** Material broken at 100 µm.

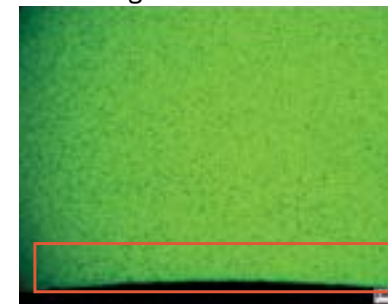
MJ SPIRAL DOUBLE-BUTTED TUBE

x100 Magnification

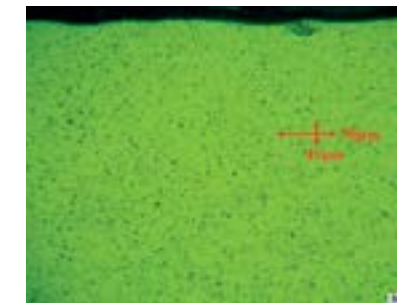


**Outside wall:** More densely packed. Note amount of grain.

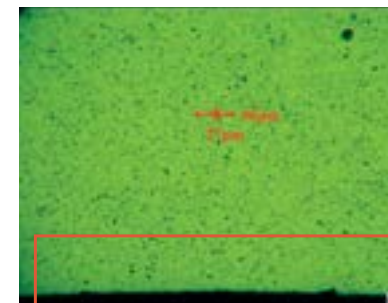
x200 Magnification



**Outside wall:** More densely packed. Note amount of grain.



**Inside wall:** Material remains together and unbroken.



**Inside wall:** Material remains together and unbroken.

PROCESS COMPARISON : BUTTED HANDLEBAR PRODUCTION

STANDARD

4 - 5 STEPS



Lower strength  
Higher cost  
Longer working time  
More waste, less eco-friendly

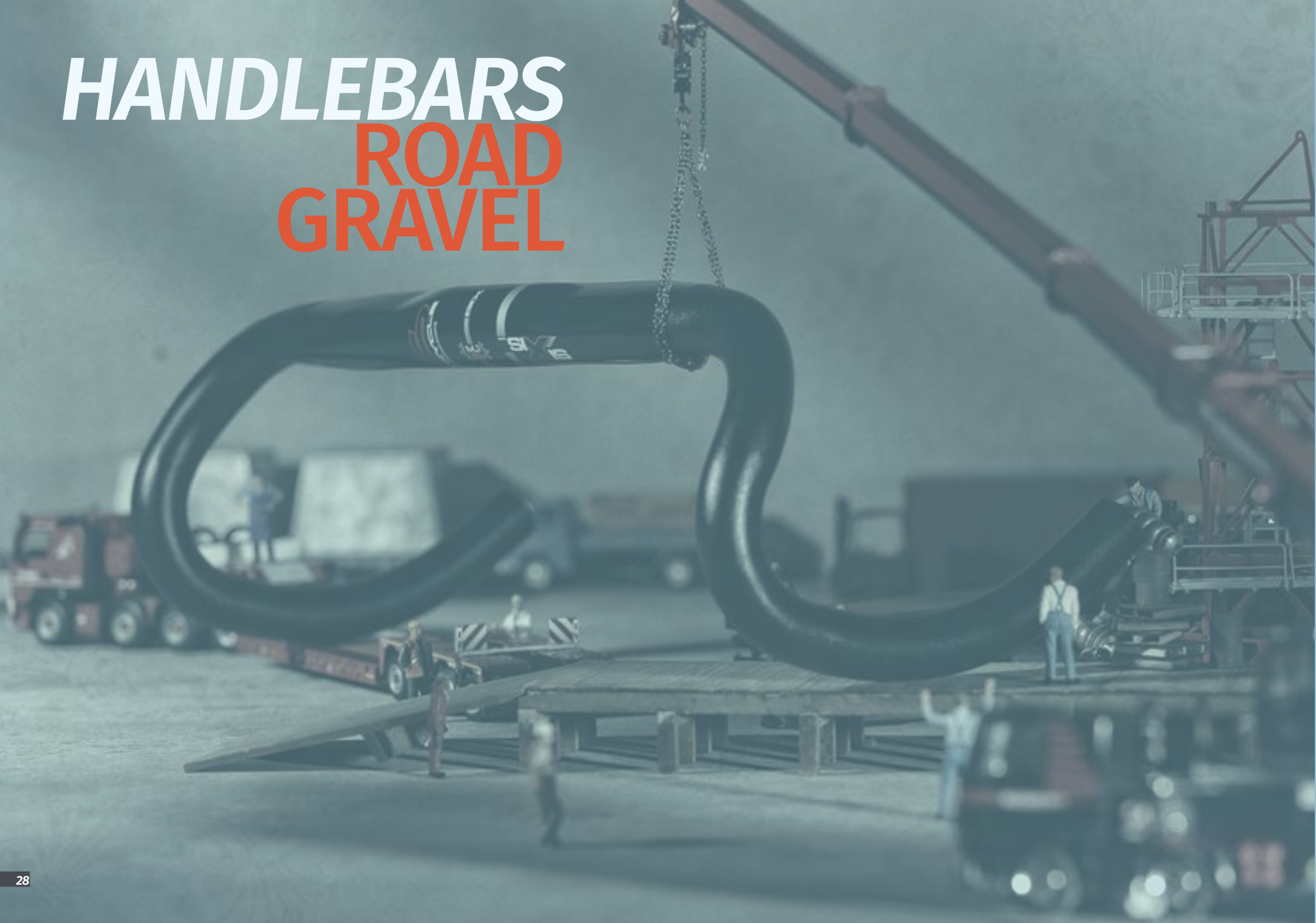
MJ SPIRAL-BUTTED

1 - 2 STEPS



Higher strength  
Competitive cost  
Shorter working time  
Less waste, more eco-friendly

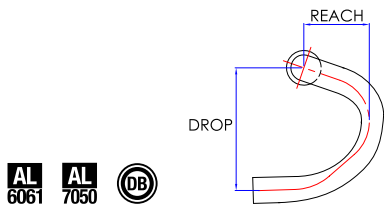




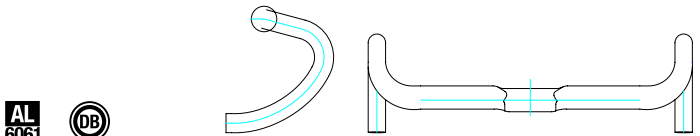
# HANDLEBARS

## ROAD GRAVEL

## HANDLEBARS » ROAD, GRAVEL



**SPECIAL DESIGNS:**  
- Rounded center with flat sides  
- Internal cable routing (MJ-RH33-IN)



MATERIAL

BAR CENTER

WIDTH (C to C)

DROP

REACH

WEIGHT

### MJ-RH29S Series

Double-buttet  
MJ-RH29S-60 6061 T6 alloy  
MJ-RH29S-70 7050 T73 alloy

31.8mm

400 - 440mm

130mm

75mm

### MJ-RH33 Series

Double-buttet  
MJ-RH33-60 6061 T6 alloy  
MJ-RH33-IN Internal cable routing, 6061 T6 alloy

31.8mm

400 - 440mm

140mm

75mm

MJ-RH33-70 303g



# HANDLEBARS » ROAD, GRAVEL



**SPECIAL DESIGN:**  
Drops angled outward



MJ-RH40-12



**SPECIAL DESIGN:**  
Drops angled outward



MJ-RH41-25

AL 6061 AL 7050 DB

## MJ-RH40-12

6061 T6 aluminum

31.8mm

360 - 500mm

125mm

80mm

12°

WEIGHT

AL 6061 AL 7050 DB

## MJ-RH41-25

6061 T6 aluminum

31.8mm

360 - 500mm

125mm

80mm

25°

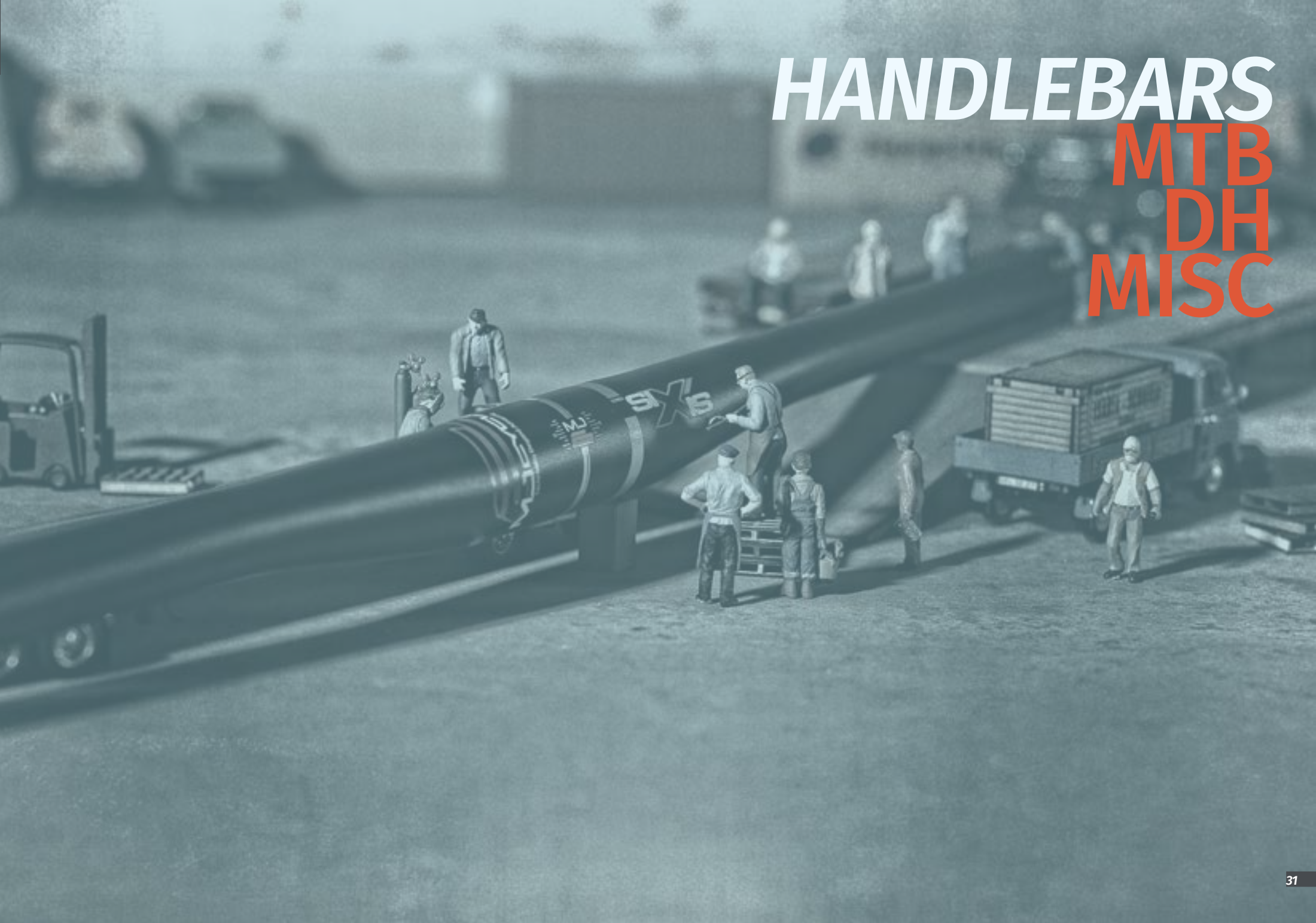
WEIGHT

# HANDLEBARS

## MTB

## DH

## MISC





INTERNAL CABLE ROUTING MADE-TO-ORDER

We can make any of our handlebars to have the internal cable routing feature. Simply specify when ordering.



AL 6061 DB Internal cable routing

	MJ-035R	MJ-038R
MATERIAL	Double-buttcd 6061 T6 alloy	Double-buttcd 6061 T6 alloy
BAR BORE	35mm	31.8mm
RISE	25 /35mm	25 /35mm
WIDTH (C to C)	720 - 780mm	720 - 780mm
BACKSWEEP / UPSWEEP	8° / 5°	8° / 5°
WEIGHT		



MJ-3351 Series

SPECIAL DESIGN:  
Fuller bend shape  
just below the taper.



MJ-3350 Series

SPECIAL DESIGN:  
Single tapered.

AL 6061 AL 7050

	MJ-3351 Series	MJ-3350 Series
MATERIAL	MJ-3351-6 6061 T6 alloy MJ-3351-7 7050 T74 alloy	Double-buttcd MJ-3350-6 6061 T6 alloy MJ-3350-7 7050 T74 alloy
BAR BORE	35mm	35mm
RISE	25 / 40mm	12 / 25 / 38mm
WIDTH (C to C)	720 - 780mm	720 - 800mm
BACKSWEEP / UPSWEEP	8° / 5°	8° / 5.5°
WEIGHT		MJ-3350-6 MJ-3350-7 320g (W: 750mm)

# HANDLEBARS » MTB, DH, ENDURO



MJ-131TP Series



MJ-131MT Series



MJ-133MT Series

	<div><div>AL6061</div><div>AL7050</div><div>DB</div></div>		
	MJ-131TP Series	MJ-131MT Series	MJ-133MT Series
MATERIAL	Double-buttet MJ-131TP-6 6061 T6 alloy MJ-131TP-7 7050 T73 alloy	Double-buttet MJ-131MT-6 6061 T6 alloy MJ-131MT-7 7050 T74 alloy	Double-buttet MJ-133MT-6 6061 T6 alloy MJ-133MT-7 7050 T74 alloy
BAR BORE	25.4 / 31.8mm	25.4 / 31.8mm	31.8mm
RISE	0mm	0mm	+/- 5mm
WIDTH (C to C)	540 - 700mm	720 - 780mm	720 - 780mm
BACKSWEEP / UPSWEEP	7° / -	7° / -	7° / -
WEIGHT	220g (W: 680mm)		

# HANDLEBARS » MTB, DH, ENDURO



MJ-025MT Series

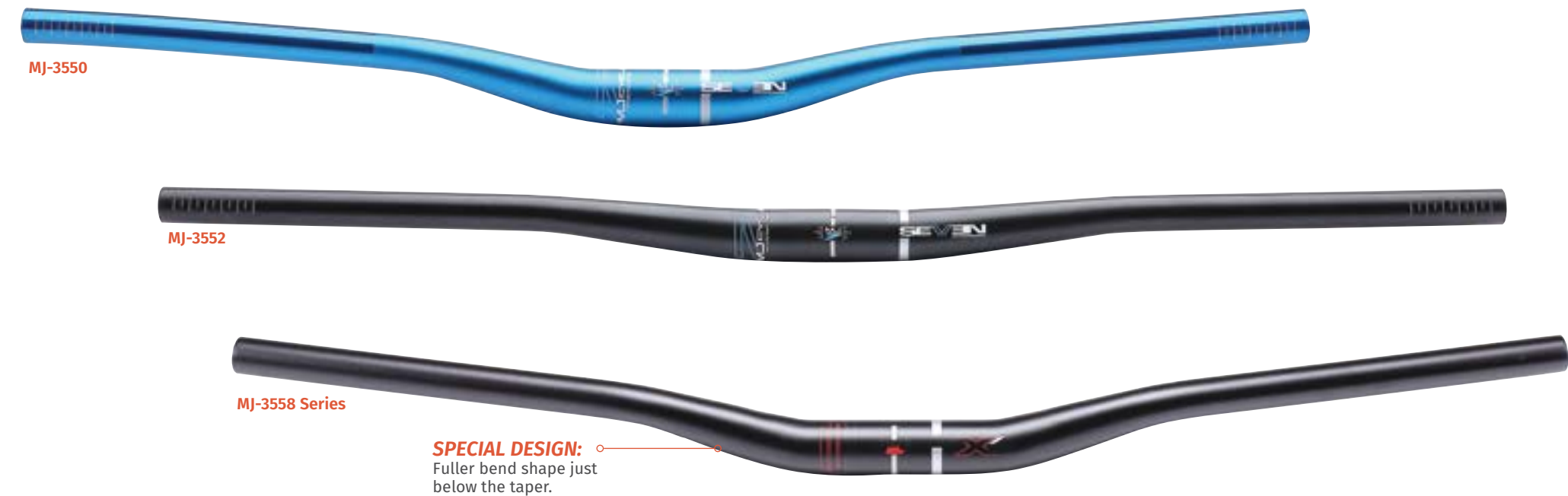


MJ-3557

	<div><div>AL6061</div><div>AL7050</div><div>DB</div></div>	
	MJ-025MT Series	MJ-3557 Series
MATERIAL	Double-buttet MJ-025MT-6 6061 T6 alloy MJ-025MT-7 7050 T74 alloy	Double-buttet MJ-3557-6 6061 T6 alloy MJ-3557-7 7050 T74 alloy
BAR BORE	31.8mm	31.8mm
RISE	15 / 25 / 35mm	50 / 76mm
WIDTH (C to C)	720 - 780mm	680 - 780mm
BACKSWEEP / UPSWEEP	8° / 5°	7° / 5.5°
WEIGHT		



HANDLEBARS » MTB, DH, ENDURO



MATERIAL	<div>AL 6061DB</div> <div>MJ-3550</div>	<div>AL 6061AL 7050DB</div> <div>MJ-3552 Series</div>	<div>AL 6061AL 7050DB</div> <div>MJ-3558 Series</div>
	Double-buttet 6061 T6 alloy	Double-buttet MJ-3552-6 6061 T6 alloy MJ-3552-7 7050 T74 alloy	Double-buttet MJ-3558-6 6061 T6 alloy MJ-3558-7 7050 T74 alloy
	31.8mm (2.4 / 1.4)	31.8mm	31.8mm
	25 / 38mm	8 / 12mm	20 / 40mm
	700 - 800mm	700 - 800mm	700 - 800mm
	8° / 5°	5° / 2°	8° / 5°
WEIGHT	300g		

HANDLEBARS » KIDS



MATERIAL	<div>AL 6061DB</div> <div>MJ-101KD</div>	<div>AL 6061DB</div> <div>MJ-102KD</div>	<div>AL 6061DB</div> <div>MJ-103KD</div>	<div>AL 6061DB</div> <div>MJ-104KD-WT</div>
	Double-buttet 6061 T6 alloy	Double-buttet 6061 T6 alloy	Double-buttet 6061 T6 alloy	Double-buttet 6061 T6 alloy
	25.4mm	25.4mm	31.8mm	
	19mm	19mm	19mm	19 / 22.2mm
	0mm	20 / 30 / 35mm	20 / 30 / 35mm	0 / 25 / 35mm
	460 - 560mm	560 - 640mm	560 - 640mm	460 - 560mm
BACKSWEEP / UPSWEEP	0° / 0°	5° / 7°	5° / 7°	

# HANDLEBARS » TREKKING, BIKEPACKING, TOURING



	AL 6061	AL 6061	AL 6061	AL 6061	AL 6061 DB	AL 6061
	MJ-TR-01	MJ-TR-02	MJ-TR-03	MJ-TR-04	MJ-TR-05-AERO	MJ-TR-06
MATERIAL	6061 T6 alloy	6061 T6 alloy	6061 T6 alloy	6061 T6 alloy	Double-buttet 6061 T6 alloy	6061 T6 alloy
BAR BORE	31.8mm	31.8mm	31.8mm	31.8mm	31.8mm	31.8mm
RISE	40mm	0mm	17mm	22mm	730mm	640 - 700mm
WIDTH (C to C)	660mm	680mm	640mm	700mm	0mm	0mm
BACKSWEEP / UPSWEEP	35° / 0°	40° / 20°	30° / 0°	30° / 3°	22° / 48°	- / 42.5°
WEIGHT						

# HANDLEBARS » TREKKING, BIKEPACKING, TOURING



	AL 6061	AL 6061	AL 6061	AL 6061
	MJ-TR-01-WT	MJ-TR-02-WT	MJ-TR-03-WT	MJ-TR-04-WT
MATERIAL	6061 T6 alloy	6061 T6 alloy	6061 T6 alloy	6061 T6 alloy
BAR BORE	31.8mm	31.8mm	31.8mm	31.8mm
RISE	40mm	0mm	17mm	22mm
WIDTH (C to C)	660mm	680mm	640mm	700mm
BACKSWEEP / UPSWEEP	35° / 0°	40° / 20°	30° / 0°	30° / 3°
WEIGHT				

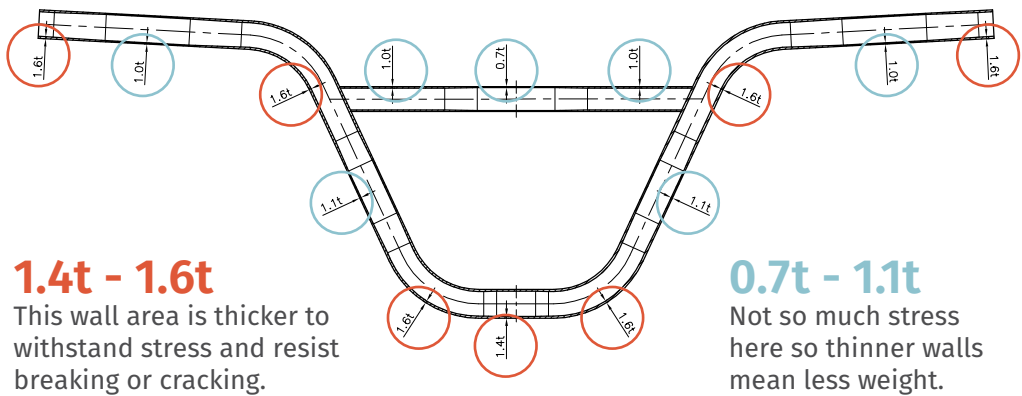


# HANDLEBARS » BMX

## BUTTED CRMO

OPTIMUM STRENGTH-TO-WEIGHT RATIO

MJ Cycle has already perfected the art and science of butted CrMo tubing, delivering the trifecta of low weight, maximum strength and long-lasting durability. Butted CrMo technology is especially suited for handlebars frequently subjected to intense stress where low weight is also a major consideration.



**1.4t - 1.6t**  
This wall area is thicker to withstand stress and resist breaking or cracking.

**0.7t - 1.1t**  
Not so much stress here so thinner walls mean less weight.



STANDARD CROSSBAR



# HANDLEBARS » BMX



CAN BE  
CUSTOMIZED

**MJ-211D**  
(Standard crossbar)

**MJ-211DX**  
(X crossbar)

**MJ-213D**  
(Standard crossbar)

**MJ-213DX**  
(X crossbar)

	BAR BORE (mm)	CROSSBAR (mm)	RISE (inch)	RISE (mm)	WIDTH (mm)	BUTTED
MJ-211D (Standard crossbar)	22.2	19 / 22.2	5.5	140	670	11
			6.0	152	660	
			6.5	165	640	
			6.75	171	680	
			7	177	645	
MJ-211DX (X crossbar)	22.2	19 / 22.2	7.25	184	675	11
			7.5	190	710	
			7.25	196	710	
			8	203	720	
			8.25	209	722	
MJ-213D (Standard crossbar)	22.2	19	8.5	215	722	13
			8.75	222	760	
			9	228	765	
MJ-213DX (X crossbar)	22.2	19				13

MATERIAL

BAR BORE

CROSSBAR

RISE / WIDTH

BACKSWEEP / UPSWEEP

**MJ-318D**

Multi-uttet CrMo with heat treatment

31.8mm

19 / 22.2mm

5.5" / 685mm  
6.0" / 690mm  
6.5" / 710mm  
7.0" / 685mm  
7.5" / 736mm  
8.0" / 736mm  
8.5" / 736mm

7° / 2°

BAR ENDS  
MTB





AL 6061 3D

BE-1159
3-D forged one-piece 6061 T6 alloy
110mm
137g

AL 6061 3D

BE-1161
3-D forged one-piece 6061 T6 alloy
110mm
144g

AL 6061 3D

BE-1162
3-D forged one-piece 6061 T6 alloy
96 / 110mm
120g

AL 6061 3D

BE-1146
3-D forged one-piece 6061 T6 alloy
96mm
120g

AL 6061 3D

BE-1147
3-D forged one-piece 6061 T6 alloy
76 / 96 / 120mm
141g

AL 6061 3D

BE-1170
3-D forged one-piece 6061 T6 alloy
115 / 120mm (Diameter: 22.2mm)
134g

MATERIAL

LENGTH

WEIGHT





# SEATPOSTS

## MTB

## ROAD

### SEATPOSTS » ROAD, MTB



**QUICK-ADJUST SYSTEM**  
Unique one-piece clamping mechanism with twin bolts for a convenient, precise and rapid saddle adjustment.



CARBON AL 6061 AL 7050 3D QAS

AL 6061 QAS

#### MSP-279-7

3-D forged 7050 T6 alloy

#### MSP-255

Forged 6061 T6 head with alloy tube

MATERIAL

27.2 / 30.9 / 31.6mm

27.2 / 30.9 / 31.6mm

DIAMETER

300 / 350 / 400mm

300 / 350 / 400mm

LENGTH

0mm

0mm

OFFSET

247g (D: 31.6, L: 350)

268g (D: 27.2, L: 350)

WEIGHT





MSP-268 Series

MSP-268 3-D forged 6061 T6 alloy  
MSP-268-6NC 3-D forged 6061 T6 alloy with CNC-machining  
MSP-268-7NC 3-D forged 7050 T6 alloy with CNC-machining

MATERIAL
DIAMETER
LENGTH
OFFSET
WEIGHT

27.2 / 30.9 / 31.6mm
300 / 350 / 400mm
0mm
MSP-268 268g (D: 31.6, L: 350) MSP-268-6NC 265g (D: 31.6, L: 350) MSP-268-7NC 265g (D: 31.6, L: 350)



MSP-282NC

7075 T73 alloy

MATERIAL
DIAMETER
LENGTH
OFFSET
WEIGHT

27.2 / 31.6mm
250 - 400mm
0mm
205g (D: 30.9, L: 350)

ONE BOLT DESIGN



MSP-267

3-D forged 6061 T6 alloy

27.2 / 30.9 / 31.6mm
300 / 350 / 400mm
20mm





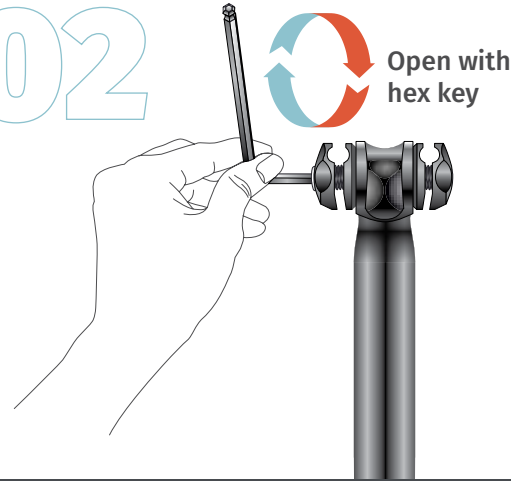
EZ-SPRING SYSTEM

PATENTED DESIGN. A single hex key is all that's needed for a quick and easy seatpost adjustment.

01



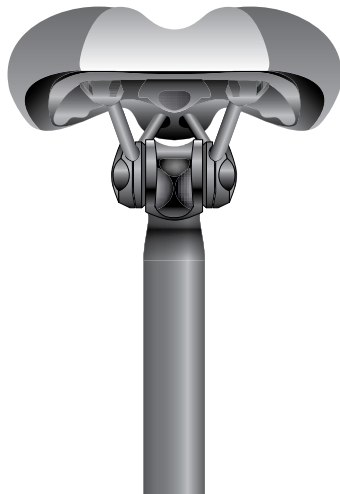
02



Open with hex key

03

Install saddle



04

Adjust & tighten



Patented design



MSP-265 Series

MSP-265-6 3-D forged 6061 T6 alloy  
MSP-265-7 3-D forged 7075 T73 alloy

27.2 / 30.9 / 31.6mm

250 / 300 / 350 / 400mm

0mm

MSP-265-6 261g (D: 31.6, L: 350)  
MSP-265-7 230g (D: 27.2, L: 350)



Patented design



MSP-266 Series

MSP-266-6 3-D forged 6061 T6 alloy  
MSP-266-7 3-D forged 7050 T6 alloy

27.2 / 30.9 / 31.6mm

300 / 350 / 400mm

15 / 20mm

MSP-266-6  
MSP-266-7 280g (D: 31.6, L: 350)







# ACCESSORIES

## SUSPENSION FORK PARTS

### SEATPOST CLAMPS

### SPROCKETS

### CHAINRINGS

### HEADSET PARTS

### SPACERS

## ACCESSORIES » SUSPENSION FORK PARTS

### SPIRAL-BUTTED TUBING TECHNOLOGY

#### HIGH-STRENGTH PARTS FOR SUSPENSION FORKS

**CUSTOMIZED PROJECT:** We can make high-quality aluminium suspension parts like steerer tubes and stanchions per your specifications.



#### • STEERER TUBE

- Made of 7050 and 6066 aluminium
- CNC-machined
- Durable construction
- Spiral-buttet technology

#### • STANCHIONS

- Material options: 7050 / **6013B** / 6066 aluminium
- Spiral-buttet technology
- CNC-machined
- Durable construction
- Hard-anodized

#### 6013B ALUMINIUM

MJ Cycle's new aluminium material offers significant advantages over 7000 series and 2000 series aluminium.

Material Properties:



Production Cost:



Cost-Performance Ratio:



Surface Flaws:



1. The material properties of 6013B are higher than 2014 alloy, falling between 7000 and 2000 series. If 6013B replaces 7000 and 2000 series, it will effectively reduce the production cost of high-performance products, providing significantly better value for customers.
2. After 7000 / 2000 series anodizing, 6013B can provide a much improved surface condition of the product.
3. 6013B has excellent extensibility, especially suitable for MJ Cycle's **Spiral Double-Butt** tube forming process.

#### MJ CYCLE'S EXCLUSIVE DOUBLE-BUTTED TUBE TECHNOLOGY

TRADITIONAL  
LINEAR EXTRUSION

Linear  
Pressure



**SPIRAL  
BUTTED**

Twisting  
Pressure

Spiral-buttet allows a more dense or compact packing of alloy material within the tube structure.

#### The results:

- » A significant gain of strength and durability without adding weight
- » More efficient production process involving less steps means:
  1. Less waste, less electricity and less resources used
  2. Faster production time
  3. Competitive pricing compared to traditional products



ACCESSORIES » SEATPOST CLAMPS



AL 6061 CNC

MATERIAL	CNC-machined 6061 T6 alloy
DIAMETER	28.6 / 29.8 / 31.8 / 34.9mm
COLORS	
WEIGHT	



AL 6061

MC-53
Forged 6061 T6 alloy
28.6 / 29.8 / 31.8 / 34.9mm



AL 7050 CNC

MC-93NC
Fully CNC-machined 7050 T6 alloy
28.6 / 29.8 / 31.8 / 34.9mm
In several colors and finishes
16g (Diameter: 34.9mm)



AL 6061 CNC

MC-98NC
Fully CNC-machined 6061 T6 alloy
28.6 / 29.8 / 31.8 / 34.9mm
In several colors and finishes



AL 6061

MC-94
Forged 6061 T6 alloy
28.6 / 30 / 31.8 / 34.9mm
In several colors and finishes



AL 6061

MC-71
Forged 6061 T6 alloy
28.6 / 29.8 / 31.8 / 34.9mm



AL 6061 CNC

MC-75NC
Fully CNC-machined 6061 T6 alloy
31.8mm



AL 6061

MC-76
Forged 6061 T6 alloy
28.6 / 29.8 / 31.8 / 34.9mm



AL 6061

MQC-312
Forged 6061 T6 alloy
28.6 / 30 / 31.8 / 34.9mm
In several colors and finishes



AL 6061

MQC-313
Forged 6061 T6 alloy
28.6 / 30 / 31.8 / 34.9mm
In several colors and finishes

ACCESSORIES » SEATPOST CLAMPS



MATERIAL
DIAMETER
COLORS
WEIGHT

MQC-93NC
Fully CNC-machined 7050 T6 alloy
28.6 / 29.8 / 31.8 / 34.9mm
In several colors and finishes
25g (Diameter: 34.9mm)



MQC-101
Forged 6061 T6 alloy
28.6 / 29.8 / 31.8 / 34.9mm



MQC-102
Forged 6061 T6 alloy
28.6 / 29.8 / 31.8 / 34.9mm



MQC-308
Forged 6061 T6 alloy
28.6 / 29.8 / 31.8 / 34.9mm



MQC-310
Forged 6061 T6 alloy
28.6 / 29.8 / 31.8 / 34.9mm
In several colors and finishes



MQC-311
Forged 6061 T6 alloy
28.6 / 29.8 / 31.8 / 34.9mm
In several colors and finishes

ACCESSORIES » SPROCKETS



MATERIAL
TEETH
THICKNESS

MJ-STXX-60 Series
Fully CNC-machined 6061 T6 alloy
23 / 24 / 25 / 28 / 30 / 33 / 36 / 39
6 / 7mm

MJ-STXX-70 Series
Fully CNC-machined 7075 T6 alloy
23 / 24 / 25 / 28 / 30 / 33 / 36 / 39
6 / 7mm





AL 7075 CNC

MJ-ST08

CNC-machined 7075 T6 alloy

23 / 24 / 25 / 28 / 30 / 32

6 / 7mm



AL 7075 CNC

MJ-ST09

CNC-machined 7075 T6 alloy

23 / 24 / 25 / 28 / 30 / 32

6 / 7mm



AL 7075 CNC DROP STOP DESIGN

MJ-DMS01

CNC-machined 7075 T6 alloy

28 - 38

In different anodized colors



AL 7075 CNC

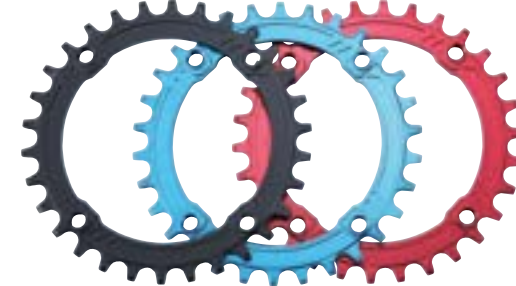
MJ-DMS02

CNC-machined 7075 T6 alloy

30 - 36

50mm

In different anodized colors



AL 7075 CNC DROP STOP DESIGN

MJ-DS01

CNC-machined 7075 T6 alloy

30 - 42

In different anodized colors



AL 7075 CNC

MJ-DS02

CNC-machined 7075 T6 alloy

30-36



AL 7075 CNC

MJ-FC4-01

CNC-machined 7075 T6 alloy

32 - 42

5mm

For 104mm 4-bolt cranks



AL 7075 CNC

MJ-FC5-01

CNC-machined 7075 T6 alloy

34 - 46

5mm, 10 / 130mm

MATERIAL

TEETH

THICKNESS, BCD

REMARKS

MATERIAL

TEETH

THICKNESS, BCD

REMARKS



ACCESSORIES » HEADSET PARTS



AL 6061 CNC



AL 6061 CNC



AL 6061 CNC CARBON

HP-08NC	HP-22	HP-22-CAL
CNC-machined T6 alloy top cap with star washer	Fully CNC-machined 6061 T6 alloy with carbon fiber cap	Fully CNC-machined 6061 T6 alloy
25.4mm	1 inch for 19 - 23, 1.1/8 inch for 22 - 26	1 inch for 19 - 23, 1.1/8 inch for 22 - 26
	For carbon fiber forks	For carbon fiber forks

ROBUST ALLOY SCREW & STAR NUT CENTER  
Cold-forged for extra strength



AL 6061 CNC



AL 6061 CNC



AL 6061 CNC



AL 6061 CNC CARBON

HP-07	HP-07A	HP-07A PLUS	HP-07-CAL
Aluminum cap	CNC-machined 6061 T6 alloy cap with CrMo screws and star nut center	CNC-machined 6061 T6 alloy cap with cold-forged alloy screw and star nut center	Carbon fiber cap
22.2 / 25.4mm	22.2 / 25.4mm	22.2 / 25.4mm	22.2 / 25.4mm

ACCESSORIES » SPACERS



AL 6061

AL 6061



CARBON

CARBON

WA-28 Series	WA-25 Series	WA-28C Series	WA-25C Series
6061 T6 alloy	6061 T6 alloy	Carbon fiber	Carbon fiber
28.8mm	25.6mm	28.8mm	25.6mm
WA-283 3mm WA-285 5mm WA-288 8mm WA-2810 10mm	WA-253 3mm WA-255 5mm WA-258 8mm WA-2510 10mm	WA-283C 3mm WA-285C 5mm WA-2810C 10mm WA-2815C 15mm	WA-253C 3mm WA-255C 5mm WA-2510C 10mm WA-2515C 15mm



AL 6061 CNC

GROOVED  
For lighter weight



CARBON

WA-288NC	WA-288C01
CNC-machined 6061 T6 alloy	Carbon fiber
28.8mm	28.8mm
3 / 5 / 8 / 10mm	3 / 5 / 8 / 10mm



# WE'RE BUILDING GREAT THINGS



Technically Beyond Amazing

No. 51, Lane 303, Section 4, Yuanlu Road,  
Hsihu Chen, Changhua Hsien, Taiwan

Tel +886 (0)4 881 2221 To 4  
Fax +886 (0)4 885 2685

[sales@mjcycl.com](mailto:sales@mjcycl.com)

[WWW.MJCYCLE.COM](http://WWW.MJCYCLE.COM)

CERTIFIED ISO 9001 - 2008

Just like our products, our factory is constantly evolving and improving with the acquisition of new state-of-the-art machines and tools. **Scan the QR code** and keep up to date with the latest products and development at MJ Cycle. We are always adding great stuff, so visit our website often.

**MJ CYCLE**  
Technically Beyond Amazing

